

OLD-FASHIONED HARVEST: Men toss the bundles of wheat from the wagon onto the conveyor, which feeds it into the separator, which separates the grain and straw. The big pile in the background is the discarded straw, which will be used during the winter months.



NOW THIS IS HOW IT WORKS: Don Irwin shows a group of interested by-standers the mechanisms of the Red River Special separator, which separates the grain from the straw.

WEATHER

Friday, July 19	69	86	0.00
Saturday, July 20	67	91	0.00
Sunday, July 21	76	98	0.00
Monday, July 22	70	90	0.00
Tuesday, July 23	71	92	0.00
Wednesday, July 24	67	87	0.00
Thursday, July 25	63	79	0.00

By H. K. L.

The Chelsea Standard

THE HUNDRED-THIRD YEAR—No. 6

14 Pages This Week

CHELSEA, MICHIGAN, THURSDAY, JULY 27, 1972

15c per copy

SUBSCRIPTION: \$4.00 PER YEAR

QUOTE

"It is with life as with a play—it matters not how long the action is spun out, but how good the acting is."

—Seneca.

Antiques Theft Discovered By Mrs. Schenk

Mrs. Sidney (Ruth) Schenk, 360 Washington St., was the victim of a self-proclaimed antique dealer who stole \$600 worth of antiques from her home.

Missing are a black teak wood chest box inlaid with pearl and shell. The box, which operates by lever action, is approximately 100 years old, and stands out 18"x3"x6". Also missing is a silver teapot of the Victorian era, approximately 100 years old.

The 74-year-old woman stated that she had met the man suspected at her home on Tuesday, July 22. The man, who identified himself as Leonard Wilson of Redford township, said that he was interested in antiques and understood that she had several items he might be interested in.

At approximately 8 p.m. Monday, July 24, the man came to the door of her home in the company of two other men, whom he introduced as antique dealers. The man asked to see some of her items.

Mrs. Schenk had cause to leave her living room and upon her return, all the men had left the house with the above items as well.

She described the main suspect as being 6' tall, 170 pounds, wearing a suit. The last was described as being 60 years old.

Police could find no record of the named suspect at the given address.

Chelsea police reported that the music box was recovered Tuesday, July 25.

Stands Filled For O. Richardson Benefit Game

Clark's 100, an Ann Arbor-based team, defeated the Saline league All-Stars, 6-4 and 5-2, in a double header Sunday, July 16 at Saline.

The game, a benefit for O. Richardson, who lost an eye in the PNR Tournament June 24, had a good turnout, reports Matt Mur-

"There were 350-400 people, the stands were full."

Tennis Tourney Entries Accepted Through Friday

There's still room if you want to enter the tennis tournament sponsored by the Chelsea Recreation Department Aug. 1 to 13. Admission price is \$1 and a can of three tennis balls. Adults and youth may enter two events.

Youth events include singles and doubles in the following categories: 12-years and under, 14-years and under, 16-years and under, and 18-years and under.

Adults may enter singles, doubles, or mixed doubles.

If interested, contact Ken Larson, 410 Wexley St., Chelsea, by this Friday, July 28.

Rock Hurlled Through Plate Glass Window

Earl's Mobil gas station, corner of I-94 and M-52, had one of its plate glass windows destroyed Thursday, July 20. The incident was reported at 5:50 a.m.

Police believe that an unknown subject took a rock about two inches in diameter and used some kind of a slingshot to shoot the rock through the middle pane of glass.

The rock was found all the way across the bay of the station, and glass was all over the floor for about 30 feet. Police stated that the rock couldn't have been thrown, because of the thickness of the glass and the location where the rock was found.

Chelsea Women Win Cash in State Bowling Tourney

Mrs. Leon (Kathleen) Chapman, 629 N. Main St., was pleasantly surprised to open her mail and find that she had won a total of \$208 in the Women's State Bowling Tournament.

Mrs. Chapman placed 11th in the singles event, and won \$185 for her efforts. She bowled 191, 198, and 165, which came to 697 with her handicap. She won \$20 for placing 88th in the all-team event, and \$3 for her score in the doubles event.

(Continued on page six)

199 Finish Driver Ed Training

After 30,488 miles and the completion of the Drivers' Education program Friday, July 21, Chelsea has gained 199 potential drivers.

Each student, both in and out of school who becomes 16 years of age by Jan. 1, 1973, was eligible to take Drivers' Education.

Classroom work started March 13. Thirty hours of classroom instruction was held after school and on Saturdays. Students covered the work in "Sportsmanlike Driving," which was supplemented by movies about driving and outside speakers such as an insurance man and a state policeman. The students were required to maintain passing work (60 percent) on all written tests to be eligible to drive.

Students were broken up into seven classes, taught by Charles Kelly, Carl Genske, Philip Barsis, Paul Simon, Pat Wade, James Hoffmeyer, and Miss Schreiner. A state regulation stipulates that no class contain more than 36 students.

The concept of a regional planning committee had its origin during the summer of 1971. At that time, several of the civic leaders in northwest Washtenaw county and northeast Jackson county discussed the need to provide guidelines for orderly regional growth.

Following preliminary meetings in early 1972, five townships: Dexter, Lima, Lyndon, Sylvan, and Waterloo, and the village of Chelsea, agreed to participate in monthly sessions to examine problems of mutual concern.

Proposed by-laws outline five goals of the organization. These include: 1) assisting in the physical growth of the area to promote health, welfare, safety, orderliness, and convenience, and to assure an attractive region in which to live and work; 2) to promote planning among public and private entities, and among the citizens of the region by making available knowledge on the economic, social, and physical aspects of the area; 3) to



CARPC EXECUTIVE OFFICERS: Officers of the Chelsea Area Regional Planning Committee gathered to plan for the first public meeting, Thursday, Aug. 3. Pictured left to right: John Tandy, vice-chairman; Gorton Riethmiller, chairman; and Robert Ward, secretary.

Area Planning Committee Plans First Public Meeting

Chelsea Area Regional Planning Committee (CARPC), will hold its next meeting Thursday, Aug. 3, at 8 p.m. at the Sylvan Township Hall. The meeting is open to the public. Representatives from Lima and Waterloo townships will lead the discussion on current planning projects, problems, and objectives within their area.

The concept of a regional planning committee had its origin during the summer of 1971. At that time, several of the civic leaders in northwest Washtenaw county and northeast Jackson county discussed the need to provide guidelines for orderly regional growth.

Following preliminary meetings in early 1972, five townships: Dexter, Lima, Lyndon, Sylvan, and Waterloo, and the village of Chelsea, agreed to participate in monthly sessions to examine problems of mutual concern.

Proposed by-laws outline five goals of the organization. These include: 1) assisting in the physical growth of the area to promote health, welfare, safety, orderliness, and convenience, and to assure an attractive region in which to live and work; 2) to promote planning among public and private entities, and among the citizens of the region by making available knowledge on the economic, social, and physical aspects of the area; 3) to

prepare a comprehensive plan of future land use, transportation, utilities, and facilities, as a guide for the development of the region; 4) to assist and make recommendations to the village and townships in solving problems associated with local development, zoning, subdividing, and the like; and 5) to further

Babe Ruth C Team Racks Up 10th Win

Chelsea C Babe Ruth baseball team defeated Dexter B Monday, July 24, 20-7. The victory was the team's 10th win.

Randy Musbach started his first game this season as a pitcher, and received credit for the victory.

Timely hitting by Mark Pennington, Dave Alber, Jim Boyer, and Randy Guenther aided the Chelsea cause. The team has one more game to go to finish the season. They are now league leaders.

The team won its ninth game by forfeit. Manchester A forfeited Thursday, July 20.

Chelsea C took on a stubborn Dexter A team Monday, July 17. Dexter A has been mired in last or next to last place all year and was determined to better themselves at the expense of Chelsea C.

Dexter jumped off to a 6-0 lead in the first inning, and it took Chelsea three innings to catch up. Chelsea then took the lead, 9-6, only to have Dexter come back and tie the game. Chelsea scored four more runs in the bottom of the sixth.

Leading, 13-9, Chelsea barely scraped by the last inning and only after Dexter scored two more runs.

Todd Orthbring and Dave Alber pitched for Chelsea. Dave Murphy had a long home run and three other hits. Mark Pennington, Tim Eder, and Jim Boyer all came through with timely hits.

The league leaders defeated second-place Chelsea B, 11-3, Friday, July 14. John Houle, who will be spending the balance of the season with his grandparents, and Dave Alber pitched for the winners, and Dennis Messner took the loss. John Houle connected for a long home run, and Dave Murphy was four for four at bat, including a double. Dave Alber had three hits for the day.

Chelsea C rolled over Dexter B, 19-0, Wednesday, July 12.

(Continued on page eight)

Sound of Music Crews Ready For Opening

As the cast and crew of "The Sound of Music" prepare for opening night, DiAnn L'Roy reports that there are "just a few seats left." She adds, "We have maybe 20 or so seats on the fringes left for each night. We will be selling

standing room after all the tickets are sold."

Patrons may buy tickets at the Chelsea Drug store up to 6 p.m. Friday night. After that, tickets will be sold at the high school.

Miss L'Roy says that preparations for the play are going "really smooth." "Everything is going well, and we're all ready. There have been no hitches—the costumes, drops, lights, and music arrangements are fitting together for a fine performance."

Head Start Program Has 36 Children

The Head Start program, which helps prepare children for their elementary schooling, is rapidly progressing in Chelsea.

Students consist of 36 children from Chelsea and surrounding communities.

Classes are held at North Elementary school under the supervision of Mrs. Vivian Michelson, teacher; Mrs. Judy Koch, family co-ordinator; and a staff of dedicated volunteers.

An open house welcoming parents, students, and families was held on Friday, June 30, at North school. Speakers were students from the University of Michigan dental school. The dental students showed films and discussed proper dental care, especially related to pre-school and school-age children.

Head Start children are examined and treated at the school of dentistry as part of the program.

Mothers decided to deck the children in "pioneer day" costumes for the Chelsea Fair Parade, at a meeting held July 12.

Chelsea High school provided the use of their home economics room for a meeting held Wednesday, July 19. Food demonstrations were given by the Michigan Consolidated Gas Co. Various nutritional recipes were prepared and served.

Thursday, July 20, physical examinations and immunizations were given to the children at the Chelsea Medical Center by Dr. Jerry Waldyke and Dr. Linda Cohen.

Future activities are now being planned, open to discussion by the parents.

Home Entered During Brief Vacation

Geraldine Owen, 459 North St., reported to Chelsea police Friday, July 21 at 5:45 p.m. that while she was on vacation an unknown person had entered her residence. She was on vacation from July 10 to July 21. Nothing was taken from the house.

Entry to the house was gained by a window on the east side of the house. The screen had been torn off and the window forced up. Exit was made through the west side door.

The complainant stated that she had turned off the electrical power in the home by pulling the fuses.

She had returned home at approximately 5 p.m. and discovered that her home had been entered and that the kitchen and bathroom lights were on. The west side rear door was left standing open while the storm door was closed. Both doors were unlocked and they were locked before she had left on vacation.

She reported that nothing had been taken or disturbed. Neighbors had seen the landlord around the residence while she was on vacation, but did not see him enter or leave the house.



CHELSEA BABE RUTH A TEAM: Front row, left to right: Brad Glazier, Mark Dalton, Don Mordeau, Don Nadeau, Matt Tobin, and Mike Check. Middle row, left to right: Mike Fouty, Mike Tobin, Dan Barnes, Eric Prinzling, Steve Siebert, and Ken Larson, coach. Top row, left to right: Mike Nadeau, Perry Johnson, Rex Lawrence, Paul Wood, Don Murrey, and Bill Clark. The team is tied for second place in the league.

Money, Cokes Taken from Mobil Station

Earl's Mobil gas station, corner of I-94 and M-52, was robbed of \$166.50 and a case of Cokes sometime between 10 p.m. Friday, July 21, and 5:55 a.m. Saturday, July 22.

The morning attendant discovered the money missing at 5:55 a.m. and called the police department. The container that the money was usually kept in was lying on the floor, just inside the door of the grease room.

Since there was no sign of forced entry, the police called the attendants who closed the station the night before. They claimed that they had left the money, and had secured the building. The money was not locked up but hidden.

On closer inspection, police found the north garage door unlocked but shut. The case is still open.



LEAGUE-LEADING Chelsea C Babe Ruth Team: Front row, left to right, Mark Burnett, Jim Boyer, Tim Eder, Randy Musbach, Steve Lierle, Todd Orthbring, and Craig Sprague. Back row, left to right, Arden Musbach, coach, Dave Murphy, Randy Guenther, Dave Alber, Mark Pennington, and Dave Murphy, coach.

Uncle Lew from Lima Says:

DEAR MISTER EDITOR:

I see by the papers where bartenders has the highest voting average of any group in the country. This report I saw on voting patterns says more than 90 percent of bartenders use their voting privilege, and the groups studied showed a drop from there all the way down to 16 per cent for housewives. Mister Editor, I thought this up one side and down the other, and I can't figure why bartenders lead the voting parade. Maybe you can work on it.

Maybe it is that the feller behind the bar hears ever possible political argument and is in a better spot to make up his mind. On the other hand, after hearing so many discussions on the subject, you might think he would lose interest. Other than housewives, wimmen general turn out pretty good for elections, according to the study. The 18 to 21 year olds ain't as excited about taking part in running their Governments as they was afore they got the vote.

Actual, Mister Editor, everything has been surveyed, compiled, analyzed and otherwise figured out til a feller never knows what to believe. I don't know, for instant, how the writer of this magazine piece got reports from all the groups on their voting habits. What he done, probable, was take samples like they do in all them public opinion polls. I recollect where a telephone survey was took that proved Dewey would clobber Truman, but a heap of voters that didn't have telephones went to the polls.

You never know what's going to be analyzed next. In a paper recent I saw where the National Macaroni Institute reported that the per capita annual eating of macaroni, noodles and spaghetti in this country was 5,216 feet. In the same paper I read where the average male spends a average of 5.5 seconds looking at a average female passing on a average American street, but taxicab drivers don't look but 1.2 seconds. And this survey shows that smoking ain't going down all that much, but snuff dipping is going up fast. Til I read that, Mister Editor, I had forgot that a levelheaded feller is one where the snuff juice runs out of both corners of his mouth at the same time.

Howell

Livestock Auction

Mason 677-8941
The Wise Owl Says: Ship to Howell
SALE EVERY MONDAY, 2 p.m.
Phone 546-2470, Bim Franklin

Market Report for July 25

CATTLE	
Good to Choice Steers, \$37 to \$38.50	
Good Choice Heifers, \$33 to \$36	
Fed Holstein Steers, \$32 to \$34	
Ut.-Std., \$30 and down.	
COWS	
Heifer Cows, \$28 to \$30	
Ut.-Commercial, \$26 to \$27.50	
Canner-Cutter, \$23 to \$27	
Fat Beef Cows, \$20 to \$22.	
BULLS	
Heavy Boloma, \$31 to \$34	
Light & Common, \$30 and down.	
CALVES	
Prime, \$56 to \$60	
Good-Choice, \$50 to \$55	
Heavy Deacons, \$46 to \$55	
Cull & Med., \$30 to \$45	
FEEDERS	
300-600 lb. Good to Choice Heifers, \$32 to \$35	
400-700 lb. Good to Choice Steers, \$36 to \$44	
300-600 lb. Holstein Steers, \$33 to \$35	
500-600 lb. Holstein Steers, \$30 to \$32	
Common-Med., \$30 and down.	
SHEEP	
Wool Slaughter Lambs:	
Choice-Prime, \$30 to \$32	
Good-Utility, \$28 to \$30	
Slaughter Ewes, \$26 to \$32	
Feeder Lambs, all weights, \$28 to \$31	
HOGS	
200-250 lb. No. 1, \$30 to \$30.70	
200-240 lb. No. 2, \$28.50 to \$30	
240 lb. and up, \$26 to \$28.50	
Light Hogs, \$28 and down.	
Sows:	
Fancy Light, \$24 to \$24.50	
300-500 lb., \$23 to \$24	
500 lb. and up, \$22 to \$23	
Boars and Stags:	
All Weights, \$23 to \$25.25	
Feeder Pigs:	
For Head, \$18 to \$26	
HAY	
1st Cutting, 60c to 75c	
2nd Cutting, 75c to 90c	
STRAW	
For Bale, 50c to 65c	
COWS	
Treated Dairy Cows, \$350 to \$500	
Treated Beef Type Cows, \$250 to \$400	

General speaking, these summer days is good for setting around reading surveys, and staying off the roads. I saw where they is 3.72 million miles of roads and streets in this country, and I figure they ain't many of them miles that ain't got a camping trailer and a passle of younguns on them. Everbody is going somewhere, and in a hurry to get there. I druther not be counted in the next survey of traffic accidents.

On top of that I see where this engineer in England has designed a car made out of wood. That's somepin, Mister Editor. If you have a bad wreck in yore car and you don't get killed with splinters, you can at least use the kindling for the campfire.

Yours truly,
Uncle Lew.

State 4-H Dairy Show Starts Aug. 22

The State 4-H Dairy Show will be held Aug. 22-24 on the Michigan State University campus. 4-H'ers need not bring an animal to participate in this event, but those with animals are encouraged to exhibit them.

Demonstrations and science exhibits will be presented Tuesday afternoon; with the top individual or team receiving a trip to the National Dairy Conference in Madison, Wis.

A new activity this year will be a mock sale with the 4-H'ers forming syndicates and getting first-hand experience at bidding on animals and trying to get the best buys for their 4-H dollars.

A dairy cattle judging contest will be held for Junior (14 years and under) and Senior (14 years and up) contestants and county teams on Wednesday.

At the dairy banquet the winners will be announced for the top Junior and Senior individuals or teams in the judging contest, the Science Exhibit, Demonstration Contest, Production Awards, Milk Marketing winners and the State 4-H Dairy Achievement contests.

Thursday will be the dairy show, also new this year, with anyone who exhibits in the show receiving a premium.

Entries are due at the County 4-H Extension Agent's office by Aug. 10. For additional information or questions contact your County 4-H Extension Office.

Color is coming back to upholstered furniture. Manufacturers are introducing chairs and sofas in bright greens, bright and lemon yellows, blues and orange-red combinations.



CLOSED for VACATION

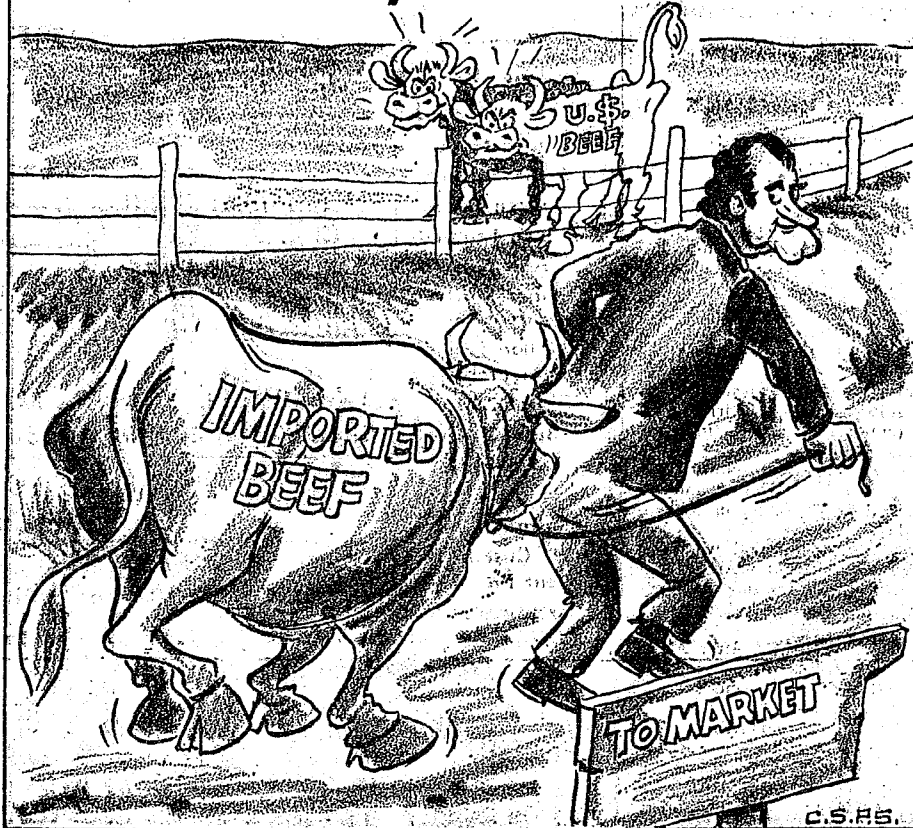
From
Monday, July 31
Until
Monday, Aug. 7

WINANS OPTICAL
Phone 475-1233
114 N. Main St.
(In Sylvan Hotel)
CHELSEA, MICH.

DAVID WINANS
OPTICIAN

APPOINTMENTS
NOT NECESSARY

MOO-VE OVER, SEÑOR...



MICHIGAN MIRROR

By Elmer E. White, Secretary, Michigan Press Association

Work Not Finished

A stack of unfinished business will greet Michigan legislators when they return to the Capitol the first week in September.

The lawmakers have already done quite a bit this year, with the enactment of a series of environmental measures, establishing a presidential primary, submitting a Vietnam veterans bonus to voters and establishing a state lottery.

But several highly significant measures still are waiting for final action.

Heading the list are bills to establish a no fault auto insurance system and putting into motion an accelerated transportation construction system for Michigan. Both bills have cleared one house of the legislature and both have been fought tooth and nail by lobbyists for different special interest groups.

The no fault insurance bill passed the Senate May 8 and has been in a House committee ever since. Backers of the bill promise to move it out of committee onto the floor when they return. It is being opposed vigorously by the state's trial lawyers, who stand to lose millions of dollars in fees if it is enacted.

The bill would require a policyholder's insurance company to pay his claims within 30 days of filing or pay a 12 percent penalty fee. The payment would be made regardless of who was at fault in the accident.

Every driver in Michigan would be required to have insurance on his or her car, something that is not now the case.

The bill has strong backing from both Republican Gov. William G. Milliken and Democratic Secretary of State Richard Austin. In the Senate it was sponsored by Sen. L. Harvey Lodge, R-Waterford.

Lodge said courts today are jammed with suits coming out of auto accidents. One result, he said, is that persons who really need money to quickly pay hospital bills or household bills because of lost income must wait "years and years and years before they get anything. And then the lawyer gets a big chunk of the money."

Lodge is a lawyer and he said

Inverness Golf League

	Pts.
Stan's Flower Shop	44 1/2
Central Fibre	41 1/2
Seitz's Tavern	38
3-D Sales	36
Chelsea Milling	35 1/2
Chelsea Lanes	35
Dana Corp.	31
Meabon's	31
Dancer's	30
Longworth Plating	28 1/2
Delf's Paint	27 1/2
Palmer's T-Birds	26 1/2
A. D. Mayer Ins.	26
Lindell Forging	25
Inverness Inn	24
Schumm's	23
The Pub	20 1/2
Chelsea Lumber	16 1/2

Gouda cheese, the red-waxed coated cheese, has a mild, nutlike flavor that is delicious when you serve it with fresh apples for a light afterdinner dessert. Gouda cheese also makes an excellent centerpiece for a snack tray of varied cheese slices and mixed crackers.

MEET YOUR FRIENDS AT

INVERNESS INN

Your Innkeepers: Matt and Marge
13996 North Territorial Rd. - North Lake

YOUR FAVORITE MEALS

SHRIMP, CHICKEN & FISH DINNERS
Marion at the Organ Saturday Nights

BEER - WINE - LIQUOR

Open Mondays

JUST REMINISCING

Items Taken from the Files of The Chelsea Standard

4 Years Ago...

Thursday, Aug. 1, 1968—

Donovan Sweeney retired Monday morning after 41 1/2 years at Federal Screw Works.

More than 300 students from 48 Michigan counties are attending University of Michigan summer seminars for high school juniors in three-week sessions. Attending from Chelsea are Richard R. Marshall, 750 Flanders St., and Lance K. Burehardt, 214 E. Middle St. Both chose engineering science seminars.

Lynne Christine Faist, 139 Clarendale Ct., and Gary Larson, 325 Middle St., spent three days at the Western Michigan University campus last week for testing, orientation, and registration.

Results of the latest summer recreation track meet held July 26 are in. Matt Heudlauff was the big winner, taking four first places in junior division competition. Other winners included: John Daniels, Steve Pennington, and Don Morrison. Randy Musbach equaled Heudlauff's wins in the senior division. Other winners included Dave Leach, Bill Redemacher, Jim Storey, and Mark Heudlauff.

Two teams were selected recently in the county 4-H Livestock Judging Contest to represent Washtenaw county at the State 4-H Show. Winners in the junior division were Mary Straub, Janet Mast, Stephen Straub, Laura McCalla, Ross Haussler, and Mary Gimbach. The senior team consists of Bobby Gimbach, Leora Haussler, Jim Burmeister, Gail Gimbach, Loren Heller, and Judy McCalla.

24 Years Ago...

Thursday, July 28, 1948—

Mary and Cynthia Paul, on a Western trip with their parents, Dr. and Mrs. I. J. Paul, had a rather unusual opportunity, which they accepted with great delight—they were invited to take part in the Wild West Rodeo in Cody, Wyo.

Chelsea Veterans of Foreign Wars Auxiliary celebrated the third anniversary of its institution with a birthday party at St. Mary's hall Monday. Participants included Eva Schiller, Clotel Frayer, Mary Kniss, Clara Hufz, Anna Dvorak, Lula Icenogle, Shirley Rihimaki, Margaret Mary Dull, Mary, Yvonne, and Joanne Hoffman, Mary Margaret Lonsway, Magdalena Weber, Anna Werner, Augusta White, and Esther Matthews.

Chelsea people who attended the 17th annual Bahmiller reunion at the county park near Dexter included Mr. and Mrs. E. J. Bahmiller, Mr. and Mrs. Jay Weinberg, and Mr. and Mrs. Elmer Weinberg.

Mr. and Mrs. M. W. McClure and daughter, Jean, returned home Sunday evening from a two-week vacation in the Pacific northwest.

34 Years Ago...

Thursday, July 28, 1938—

During the severe electrical storm which struck Chelsea and vicinity early Tuesday morning, the home of Gottlieb Heller was struck by lightning, and the bolt followed the wires to the barn where a cow was killed. J. P. Cook and Mrs. J. J. Rafferty also suffered property damage.

Helping John Kelly celebrate his 80th birthday were Mr. and Mrs. Max Kelly, sons David and Walter, Mrs. Mary Lusty, Mr. and Mrs. J. F. McLaughlin, and Mary, Jane, Kay, Jack, and Edward McLaughlin.

Elmer Weinberg, Norbert Merkel, Oscar Schneider, and Reuben Schneider are spending several days at Lake St. Helen, near West Branch. They expect to return the last of the week with some large fish (or stories).

Percy Guetl's pitching, Wesley Smith's umpiring, and Albert Johnson's bat all helped the Chelsea Kiwanis Club softball team defeat the South Lyon Kiwanis team 17-2. This was the second successive week that they have defeated the South Lyon team.

A number of people from Chelsea and vicinity were in Dexter on Sunday to attend the memorial service for the late Senator Royal S. Copeland. Chelsea relatives who attended were Mr. and Mrs. D. H. Wurster and family, Misses Jane and Josephine Walker, Mrs. Howard Holmes and sons, Dudley and Howard, Jr.

14 Years Ago...

Thursday, July 31, 1958—

Jon Harris, son of Mr. and Mrs. Robert Harris, is attending the Smith - Walbridge Drum Major Camp at Syracuse, Ind., this week. He attended on a Band Booster scholarship.

A magnificent gift to the village of Chelsea was revealed in the will of the late Catherine M. McKune. Filed yesterday in Probate Court at Ann Arbor. The will provides that the historic McKune House at 221 S. Main St. shall be given to the village as a public library to be known as McKune Memorial Library.

Jane Smith and Judith Doe, both graduates of Chelsea High school, are among the 188 students of Mercy School of Nursing who will graduate Sunday at commencement exercises in Ford Auditorium, Detroit.

Demonstrations at the Lima-Seo Cooks 4-H club were given by: Rose Sharon Lutz, coffee cake; Susan Peck, salad; Judy Bateson

WHEAT GROWERS

Check Us for Our
New Storge Program

Michigan Warehouse Receipt
Government Storage

Fast and Prompt Service

HONEGGERS & CO., INC.

Chelsea, Mich.

Ph. 475-3611

REP. JIM BROWN

IS A

WINNER!!

*He co-sponsored HB 3055, called the toughest anti-pollution legislative act in America!

HE WON . . . WE WON

*He led a fight, and spent his own money, to stop an extremely expensive dental plan for politicians and their families!

HE WON . . . WE WON

*He "put on the heat" to force a commitment on the 500 employee new Lansing Postal Facility - YES - 500 new jobs!

HE WON . . . WE WON

*He formed a special legislative committee to slow down the spiraling cost of government, due in part, to "free" political newsletters. ("We really need to go to work in Washington on this one!")

HE WON . . . WE WON

"He Wins And we all win!"

Let's Send **REP. JIM**

BROWN to CONGRESS

Pd. Pol. Adv. Pat Laughlin, Chairman For Jim Brown To Congress Committee.

Established 1871 **The Chelsea Standard** Telephone GR 6-3581
Excellence Award By Michigan Press Association
1951-1952-1960-1964-1965-1966
Walter P. Leonard, Editor and Publisher

Published every Thursday morning at 300 North Main Street, Chelsea, Mich. 48118, and second class postage paid at Chelsea, Mich., under the Act of March 3, 1879.

Subscription Rates (Payable in Advance)	
In Michigan:	Outside Michigan:
One Year \$4.00	One Year \$5.00
Six Months \$2.25	Six Months \$3.50
Single Copies .15	Single Copies .20
Service men or women, anywhere, 1 year \$4.00	

MEMBER **NATIONAL NEWSPAPER** Association - Founded 1888
National Advertising Representative:
MICHIGAN NEWSPAPERS, INC.
257 Michigan Ave.
East Lansing, Mich. 48823



CHELSEA JC'S T-Ball Team: Front row, left to right: Russ Harris, David Cooley, Robert Ball, Jim Pennington, Tom Headrick, Eric Headrick, Steve Cattell, and Todd Borton. Back row, left to right: Jamey Owings, John Bentley, Dave Wojcik, Leon Durgin, John Riemenschneider, Tony Emmons, Rick Weeks, Mark Beyer, Darryl Keezer, Neil Koch, and Gayle Beyer. Robert Koch coaches the team, and Tony Rajecio is the assistant coach.

Misfits Lead in Girls Softball

Dev's Beauties squeaked by the Misfits, 18-17, Thursday, July 20, in girls softball. Getting hits for the Misfits were Len Romine and Gayle Hume, two hits; Kelly Weir and Karen Sch, three hits; Tammy Green, two hits; and Lore Schrader, one hit. Connecting for the winners were La Breeze, Mary Hume, and Frisbie, three hits; Kathy Lado, two hits; and Cindy Figg, one hit. Pat Weier.

Girl's Softball Standings

As of July 25

	W	L
Misfits	3	1
Dev's Beauties	1	1
Reddy Bears	0	2

Summertime Accidents Create Need for Extra Blood Donors

It's the summer of '72, and if it follows the pattern of its predecessors it will be a season filled with accidents and injuries. Therefore, the American Red Cross urges all healthy persons between the ages of 18 and 65 to volunteer as blood donors during the summer months, to offset the serious drain on blood supplies created by summertime tragedies.

"Blood donors are urged to make appointments with their local Red Cross blood center or chapter recruiter before they go on vacation," said Dr. Tibor J. Greenwalt, national medical director for the ARC Blood Program. "If there is no Red Cross Blood Center serving your community, you are urged

to donate at any other blood bank serving you."

And he suggested that the summer months also offer young people who have just reached the age of 18 the perfect time to become first-time blood donors. "At age 18," Dr. Greenwalt noted, "young people not only become eligible to vote, but also gain the right to give the 'gift of life'."

"Some states still require signed parental consent forms for donors under the age of 21, but most states now have legislation which permits 18-year-olds to give blood without signed forms," he added.

"Of course, the health of the donor—as well as the needs of the patient—are our main concerns," Dr. Greenwalt stressed. "Donors may give blood every eight weeks, and no more than five times a year."

He pointed out that the entire donation procedure takes only about 40 minutes from start to finish, with the actual donation time taking only seven minutes. The remainder of the time is occupied by taking the donor's medical history, temperature, blood pressure, performing a hemoglobin test, a short rest period and the serving of light refreshments.

Dr. Greenwalt explained that while one unit of whole blood can be used for just one person, it frequently is separated into red cells, platelets, fresh frozen plasma and cryoprecipitate and used to treat several different patients.

"The plasma may also be fractionated into gamma globulin, serum albumin, and antithrombin factor—functions that may be used in the treatment of a number of disorders," he added.

"Blood banking has progressed from the very personal situation in which blood from a donor was transfused directly into another person. Today's modern technology and advance in medicine permit a variety of uses for each individual unit of blood; that's why we say giving blood really means saving lives," Dr. Greenwalt concluded.

District Court Proceedings

Week of July 18-24

Sherry Navin, Chelsea, pled guilty to speeding and was sentenced to \$31 fine and costs.

Kathleen Allen, Whitmore Lake, pled guilty to speeding and was sentenced to \$31 fine and costs or five days.

Robert Taft, Ann Arbor, pled guilty to speeding and was sentenced to \$37 fine and costs or five days.

Lynford Fritz, Whitmore Lake, pled guilty to reckless driving and was sentenced to \$100 fine and costs or 15 days.

Scott Sloat, Manchester, pled guilty to careless driving and was sentenced to \$30 fine and costs or five days.

Peter Haydon, Ann Arbor, pled guilty to speeding and was sentenced to \$49 fine and costs or five days.

Bertha Wing, Ann Arbor, pled guilty to failing to yield and was sentenced to \$21 fine and costs or five days.

Mark McClair, Chelsea, pled guilty to following too close and was sentenced to \$21 fine and costs.

Robin Pollard, Ann Arbor, pled guilty to not having an operator's license on person and was sentenced to \$50 fine and costs or five days.

Clifford Hanselman, Ann Arbor, pled guilty to speeding and was sentenced to \$33 fine and costs or five days.

Charles Clement, Ann Arbor, pled guilty to speeding and was sentenced to \$37 fine and costs or five days.

David Coywood, Manchester, pled guilty to failing to yield the right-of-way and was sentenced to \$21 fine and costs or three days.

Gregory Harner, Ann Arbor, pled guilty to drag racing and was sentenced to \$40 fine and costs or five days.

Armando Trevino, Chelsea, pled guilty to being drunk and disorderly and was sentenced to \$25 fine and costs or 10 days.

Dennis Ball, Ann Arbor, pled guilty to impaired driving and was sentenced to \$150 fine and costs and attendance at alcohol education series and six months probation.

John W. Corey Named to Ann Arbor Federal Savings Board

John W. Corey has been elected to the board of directors of Ann Arbor Federal Savings. It has been announced by Roy E. Weber, president. Corey, who started his distinguished career with Ann Arbor Federal Savings in 1959, is the senior vice-president and treasurer.

Corey received his BBA degree in Business Administration from the University of Michigan in 1956 and his Masters degree in 1958. He resides at 3811 Waldenwood Dr., Ann Arbor, with his wife, Helen, and three children, Anne, Sarah, and John, Jr.

He has served as president of the Detroit Chapter of the National Savings and Loan Controllers Society; board of directors for the Michigan Children's Aid Society Washtenaw County; and, chairman of the Ann Arbor Citizens' Advisory Panel on Housing. He is currently serving as a board director and treasurer of the Ann Arbor Racquet Club, as well as being active in other various civic and community affairs.

William L. Tait, park superintendent at Stony Creek Metropolitan Park near Rochester and Utica completes 19 years of service with the Huron-Clinton Metropolitan Authority this spring. He was assistant park superintendent at Kensington Metropolitan Park near Milford from May of 1953 until he was promoted to the post at Stony Creek Park in September of 1962.

CHELSEA FINANCE CORP.

\$25 to \$1,500
For Any
Worthwhile Purpose

See or Call
FRANK HILL
at 475-8631

111 PARK STREET
CHELSEA, MICH.

Liquor Dept.
Beer and Wine
Fresh Meats
Fresh Produce
Frozen Foods
Frozen Seafoods
Fresh Bakery
Super Market
Groceries
Gallon Fruits,
Vegetables
Deli Case
Bulk Cheese
Diet Foods
Baby Food
Infant Cares
Custom
Meat Processing

STOP & SHOP At Your JIFFY MARKET

Big Enough To Serve You . . . Small Enough To Know You!
COMPLETE SUPER MARKET - PHONE 475-5701
Corner Sibley & Werkner Rds. Chelsea, Mich.

UNITED STATES DEPT. OF AGRICULTURE
AUTHORIZED FOOD STAMP STORE

STORE HOURS:
7 a.m. to 10 p.m. Daily

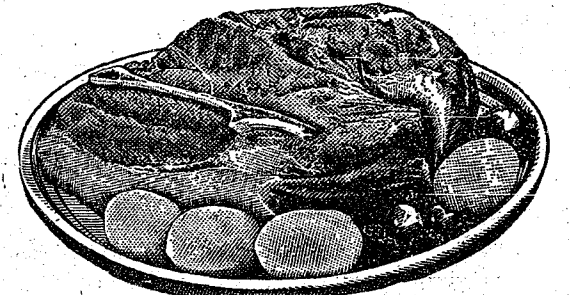
SALE PRICES EFFECTIVE
THURS., JULY 27 thru SUN., JULY 30

Magazines
Stereo Tapes
and Records
Paperbacks
Health, Beauty
Aids
Housewares
Pet Foods
and Supplies
Toy Dept.
Greeting Cards
Sewing Needs
Gift Shop
Water Softener
Salts
Garden Seeds
25-Lb.
Dog Foods
Gas Pumps

BEEF CHUCK ROAST

U.S.D.A. GRADE CHOICE

BLADE CUT 79¢ lb.
CENTER CUT 89¢ lb.
ROUND CUT 99¢ lb.
ENGLISH CUT 99¢ lb.



Tender Beef with Flavor!

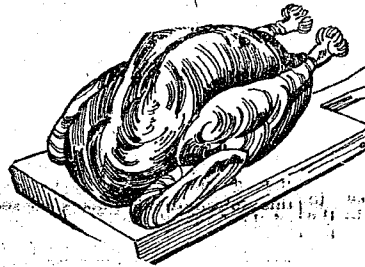
CAMELOT
SLICED BACON
1-Lb. Pkg. **79¢**

AGAR
CANNED HAM
5 lbs. **\$4.49**

CAMELOT
ALL-MEAT FRANKS
2-Lb. Pkg. **\$1.19**

FARMER PEET'S
SLICING SAUSAGE
69¢ lb.

U. S. CHOICE
RIB STEAKS
\$1.49 lb.



FRYER - ROASTER

TURKEY
U. S. GOVERNMENT
INSPECTED GRADE A
39¢ lb.
6-9 Lb. Average
Whole Turkey - no parts missing

GRADE A PASTEURIZED
HOMOGENIZED VITAMIN D
RISDON BROS.
LOW-FAT MILK
ONE GALLON PLASTIC CONTAINER
69¢

U. S. NO. 1 MICHIGAN HOME-GROWN

POTATOES 10-Lb. Bag 63¢

McCALL'S
NEEDLE WORK & CRAFTS
Fall Winter Issue **\$1.25**

HEFTY
TALL KITCHEN BAGS
15-Ct. Box **49¢**

FRESH
ORANGE JUICE
1/2 Gal. Plastic **69¢**

COMSTOCK MIXED
BEAN SALAD
1-Lb., 1-Oz. Can **39¢**

40-Lb. & 80-Lb. Bags
SALT NUGGETS
40-Lb. Bag **\$1.29**

CIGARETTES WOWIE!
All Sizes and Brands \$3.19
Carton

NEW CABBAGE
10¢ lb.

FRESH PEACHES
19¢ lb.

MICHIGAN
HEAD LETTUCE
19¢

BEAUTIFUL
RED TOMATOES
39¢ lb.

CROWN
SWEET PICKLES
Qt. **49¢**

TIDE, GIANT BOX 3-Lb., 1-Oz. 49-Oz. **69¢**

BREAST O' CHICKEN
CHUNK STYLE TUNA
6 1/2-Oz. Can **35¢**

MILK CHOCOLATE
HEATH ICE CREAM BARS
6 pak **39¢**

WAY BAKING CO.
KLEEN-MAID BREAD
1 1/4-Lb. Loaf **19¢**

COMPLETE LINE
CANNING SUPPLIES
Jars - Caps - Lids
Sure-Jell - Certo, etc.

U. S. GRADE A
SMALL EGGS
3 Doz. in Crtn. **89¢**

R. C. COLA 6 1 Pint Bottles 59¢

JIFFY MARKET MARATHON GAS PUMPS

Thank You



We appreciate your business!

MARATHON REGULAR GAS **33.9 gal.**
Includes All Taxes

MARATHON PREMIUM GAS **37.9 gal.**
Includes All Taxes

1 GALLON CAN
WINDSHIELD WASHER SOLVENT - 59¢

1 GALLON CAN
CHARCOAL LIGHTER FLUID - 99¢

1 GALLON CAN
STOVE & LANTERN FUEL - \$1.49

2-CYCO GAS **49.9¢ gal.**



5% down -
30 years to repay
GOLD KEY MORTGAGES

And that's not all. The maximum amount for a Gold Key Mortgage has been raised to \$36,000.00. This is a conventional AAFS mortgage. No red tape. Your loan request is quickly processed.

Here's how the plan works: As an example, take a single family house, owner occupied, prime property.

Cost of house \$37,900.00
Down payment 1,800.00
Mortgage \$36,000.00

260 monthly payments based on 8 1/2% interest rate (annual percentage rate 8 1/2%) \$270.46 plus tax & insurance deducts

Gold Key Mortgage rates range from 8-8 1/2%. No service fee is required. Commitment fee is 1/2% for 90 day period, plus 1% closing costs for mortgage insurance premium.

Now you have the key to buying your dream home a lot sooner than you expected. So stop in or call 663-7555 and let our mortgage experts work out the details. Or ask your Realtor or Builder about Gold Key Mortgages.

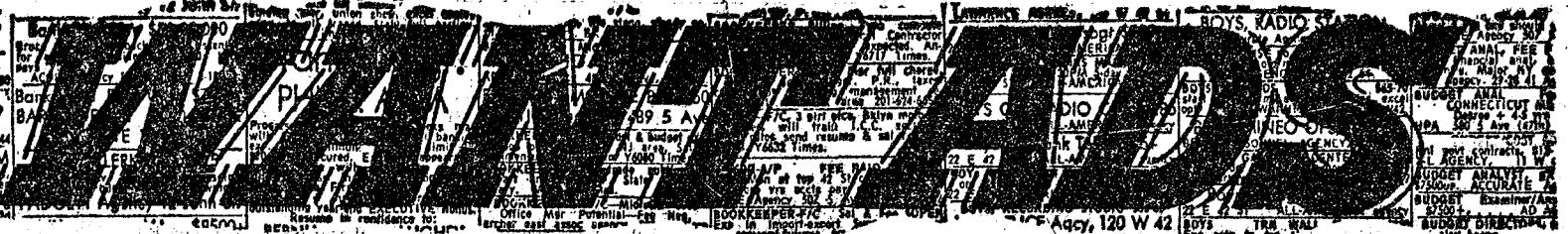


ANN ARBOR AAFS FEDERAL SAVINGS
The savings and loan specialists

ANN ARBOR OFFICES: Downtown, Liberty at Division; Westside, Pauline at Stadium; Eastside, Huron Parkway at Platt; Northside, Plymouth at Nixon; CHELSEA—Main Street near Old U.S. 12
Member: Federal Home Loan Bank System • Federal Savings and Loan Insurance Corporation

Ads
Taken
Till 5 p.m.
Tuesday

IT'S EASY TO
BUY-SELL-RENT-
HIRE & FIND WITH



Just
Call
GR 5-3581

WANT ADS

The Chelsea Standard

WANT AD RATES

PAID IN ADVANCE—All regular advertisements, 50 cents for 25 words or less, each insertion. Count each figure as 6 words. For more than 25 words add 2 cents per word for each insertion. "Blind" ads or box number ads, 50¢ extra per insertion. CHARGE RATES—Same as cash in advance, with 15 cents bookkeeping charge if not paid before 5 p.m. Tuesday preceding publication. Pay in advance, send cash or stamps and save 15 cents. DISPLAY WANT ADS—Rate, \$1.10 per column inch, single column, width only. 5-point and 14-point light type only. No borders or boldface type. Minimum 1 inch. CARDS OF THANKS or MEMORIALS—Single paragraph style, \$1.00 per insertion for 50 words or less; 2 cents per word beyond 50 words. COPY DEADLINE—6 p.m. Tuesday week of publication.

KNAPP SHOES

For Cushion Comfort
Robert Robbins
475-7282

FORMAL WEAR

RENTAL SERVICE
Proms - Weddings - Special Events
6 different colors.

Foster's Men's Wear

Seamless
Aluminum Gutters
White, brown, black or green.
WILSON METAL SHOP
428-8468, Manchester

Headquarters for
RED WING
WORK SHOES
Foster's Men's Wear

Pine Haven Saddlery
4584 Dexter Townhall Rd.
Phone Dexter 426-4268

Complete line of English and Western equipment, 10% discount to all 4-H Club members.

Store Hours: Mon.-Sat., 9-9
Sunday, 10-9
1968 DODGE 2-ton dump. Very good condition. 7 yd. capacity, 5-speed with 2-speed. Gold Crest warranted (12 mos., no limitation on mileage). Devon Lincoln-Mercury, 2100 W. Stadium, Ann Arbor. Ph. 662-5555.

Gem Travel Trailers
and Campers
PICK UP COVERS
4" ————— \$100.00
28" ————— \$179.00 and up

Triangle Sales
Chelsea 475-4502

1967 FORD 4-ton pickup, 6-cyl., 4-speed. Red. \$1095. Gold Crest warranted (12 mos., no limitation on mileage). Devon Lincoln-Mercury, 2100 W. Stadium, Ann Arbor. Ph. 662-5555.

FOR SALE—1972 Kawasaki, 500 cc., 1,600 miles. \$900. Ph. 475-8721.

WANT ADS

ALCOA SIDING SPECIALIST—Since 1938. Service and workmanship guaranteed. William Davis, Ph. Ann Arbor 663-8635. -x22

LEHMAN WAHL

Land Appraisal
Residential
and Farm
17087 West Austin Rd.
Manchester, Mich.
Area Code 313.
428-3888

PATCHING and PLASTERING
Call 475-7489.

CLOGGED SEWER

Reynolds Sewer
Service

We Clean Sewers Without Digging
Drains Cleaned Electrically
FREE ESTIMATES
2-YEAR GUARANTEE
Phone Ann Arbor NO 2-5277
"Sewer Cleaning Is Our Business—
Not a Side-Line"

THORNTON

475-8628

CALIFORNIA STYLE—All brick and redwood, located within Village on secluded wooded lot. Custom designed for children with 4 private children's bedrooms and a magnificent master bedroom.

RETIRED—Enjoy this 2-bedroom home and just a nice walk to the Village center. Priced under \$29,900.

COUNTRY LIVING—On 1 1/4 acres, 5 bedrooms, 1 1/2 baths; recreation room, attached 2-car garage; above ground swimming pool. Half Moon Lake-beach close by.

HOUSE AND 10 ACRES—Renovate it yourself, enjoy 10 acres; barn, some trees and all the advantages of rural living. Terms possible.

5 BEDROOMS—Lovely brick ranch located at Half Moon Lake, fireplace, fully carpeted, recreation room, and a corral for horse.

LOTS OF ROOM—Enjoy this large home tucked away in the woods, close to North Lake. 2 fireplaces, 4 bedrooms, study, lots of space. Just reduced as owner is anxious.

IMMACULATE—3 bedrooms, fully carpeted, a beautiful kitchen, and attached 2-car garage with a good beach at Half Moon Lake close by. Owner anxious.

3 BEDROOMS—1 1/2 baths, nice large kitchen. Just getting a fresh coat of paint and in a great location close to high school.

4 BEDROOMS—Close to shopping, nice kitchen, attached 2-car garage.

COTTAGE—Lakefront, Island Lake. Wooded lot.

TWO FAMILIES—Your choice of two in Village.

ACREAGE—Building sites from one to 70 acres. Terms.

THORNTON

Realtor - 475-8628 - Chelsea
Eves:
Helen Lancaster 475-1198
Bob Riemenschneider 475-4121
John Pierson 475-2064
Bob Thornton 475-8857

FOR SALE—Zenith black & white 19-inch TV set, in good condition, cash. Also air compressor in working condition, \$50 cash. 419 Wilkinson.

WANT ADS

HAMMOND ORGAN teachers wanted to teach in their own homes. Call Grinnell Brothers, Ann Arbor. 662-5687.

GALL FRANK for all your carpet cleaning jobs, morning or weekend. Needs only 3 hours to dry. Only 10¢ per square foot. Phone now for free estimate, 761-4325. All work guaranteed.

PIANO TUNING, Chelsea and area. Facilities for reconditioning and rebuilding. Used piano sales; reconditioned grands and verticals. E. Eklund, 426-4429.

Contractor Servicing
Chelsea, Dexter and
Manchester Areas
Complete Home Remodeling
Inside and Outside

Specializing in extra living space, recreation rooms, kitchens and paneling. Installing all aluminum products, 5" eavestroughs, custom-made awnings, windows and doors, aluminum siding in many selected colors and styles.

Please Call

DALE COOK
Chelsea 475-8868

NOW

Full Time
Complete
Body Shop
Service
Stop in For An Estimate

PALMER FORD
222 S. Main St.
475-3271

FOR REAL DOLLAR SAVINGS be sure and see us before you buy any new or used car. Palmer Motor Sales, Inc. Your Ford Dealer for over 50 years.

G. G. HOPPER

Building Contractors
Phone GR 5-5581
Gregory 498-2148

FOR SALE—Mopar parts: 3.28 ring and pinion for small rear-end, \$20; Stewart-Warner tachometer, \$15; 2 heavy-duty Monroe shocks for rear, \$20; Hi-Rise Edelbrock for 278 Mopar, \$35; 600 cfm Holley 4-barrel with manual secondaries, \$30; also, TRW 1/2 race cam with lifters for small-block Mopar, \$35. Phone 663-8228.

Low Low
Down Payment
On New
GOLD KEY
MORTGAGES

For information ask your Realtor or call 663-7555.

Ann Arbor Federal
Savings
Equal Housing Lender

FOR SALE—Beagle and English Pointer pups, mixed. Ph. 475-2140, after 6 p.m.

Wedding
or Anniversary?

Wedding and reception invitations available in wide range of styles and prices.

10% DISCOUNT
on all list prices
for wedding stationery.

Come in and let us advise you on your needs.

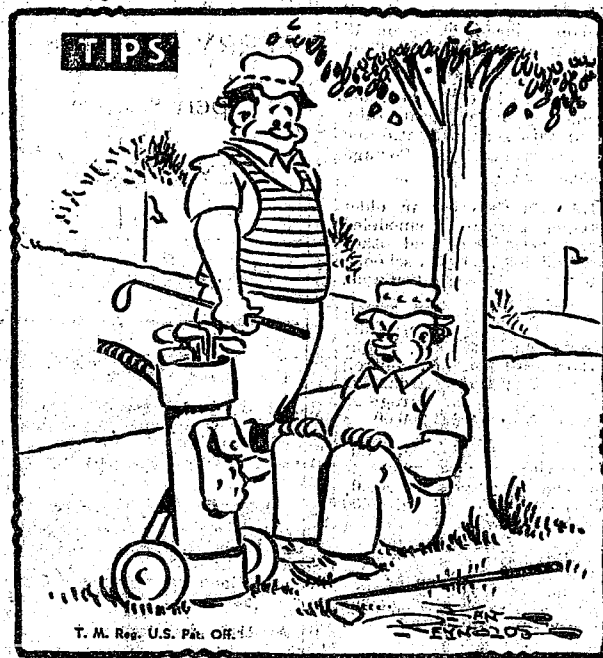
The Chelsea Standard
300 N. Main Ph. GR 5-3581

Mid-Summer
Power Mower
CLEARANCE SALE
Buy now and save.
ALL MODELS REDUCED

Chelsea Hardware
Phone 475-1121

ELECTROLUX VACUUM CLEANERS

SALES and SERVICE
JAMES COX
Ph. 428-2931 or 428-8221
Manchester



"I thought you said the golf cart you got in the Standard
Want Ads — was one we could ride in!"

WANT ADS

DIAMOND ROOFING, reroofing and repairing. Roof louvers installed. Gutters cleaned. Licensed roofer. Call 475-1129.

A fine selection of
New and Used Cars
for immediate delivery

Harper Pontiac
Sales & Service
475-5311
Evenings, 761-2999

2-CYCO FUEL
For All 2-Cycle Engines
WHITE GAS
Available at
Gateway
Sports Centre, Inc.

XEROX COPIES made. Merkel Brothers.

ROBERT A. ALDER, licensed contractor. Residential building, remodeling. No job too small. 18200 Boyce Rd., Gregory, Mich. 48137. Phone 498-2539.

McCulloch Chain Saws
Mini-Mac 6 as low as \$114.95.
Larger models at somewhat higher prices.

Chelsea Hardware
Phone 475-1121

TOYS & GIFTS PARTY PLAN!
Highest Commissions - Largest Selection! Fantastic Hostess Awards. No Cash Outlay. Call or write "Santa's Parties," Avon, Conn. 06001. Phone 1 (203) 673-8465.

ALSO BOOKING PARTIES

REAL ESTATE FOR SALE

3-BEDROOM ranch type home, full basement, 1 1/2-car garage, black-top drive, new modern kitchen. TO CLOSE ESTATE—4-bedroom, 2-baths, plus basement.

Kern Real Estate
616 S. Main, Chelsea
or phone 475-8563 or 475-2403

WANT ADS

1969 MERCURY 4-dr. sedan, p.s., p.b., auto., gold with black top. \$795. Gold Crest warranted (12 mos., no limitation on mileage). Devon Lincoln-Mercury, 2100 W. Stadium, Ann Arbor. Ph. 662-5555.

Hearthside Yarn Shop

5450 Conway Road
Yarns, needles, accessories
Free instructions in knitting and crocheting with follow-up assistance.
Orders taken for hand-made items.

Ph. 475-2014

CLARENCE WOOD REAL ESTATE

BRICK COLONIAL—4 bedrooms, 3 baths, family room with brick fireplace, finished rec. room. Spotless.

SMALL 1-BEDROOM—Has large lot with trees. Ideal for a couple. Village water and sewer. \$17,000.

CLARENCE WOOD
BROKER

Efficient PERSONAL Service
646 Flanders St., Chelsea
Phone 475-2083 or 475-8217

ALLSTATE
INSURANCE
AUTO - BOAT - COMMERCIAL
LIFE - HEALTH - HOME
Phone Eves. or Week-ends for

N. H. MILES, Agent
GR 5-8334

FOR RENT—Fair Services Center for meetings, parties, wedding receptions, etc. Weekdays or week-ends. Contact John Wellnitz, phone 475-4481.

STONE WORK—Fireplace and masonry. For estimates call 475-1150.

REAL ESTATE

10 ACRES, Waterloo Area. About 750 ft. frontage on all-weather road. Grass Lake schools.

R. D. MILLER
REAL ESTATE
Real Estate Broker
475-7811
15775 Cavanaugh Lake Rd.
Chelsea, Mich.

WANT ADS

CAR & TRUCK LEASING. For details see Lyle Chriswell at Palmer Motor Sales, GR 5-3271.

USED CARS

'72 DUSTER Twister, sport coupe, 318, automatic, p.s., vinyl roof, radio, white sidewalls, 11,000 miles \$2695

'71 FORD Torino 500 2-dr. hardtop, 351 4-bbl., 4-speed, p.s., radio, new white sidewall tires, dark blue finish \$2295

'69 PLYMOUTH Satellite, 2-dr. hardtop, 318, V-8, automatic, p.s., vinyl roof \$1495

'69 FORD LTD Country Squire wagon, 10-passenger, 390 engine, automatic, p.s., power disc brakes, air conditioning, Michelin tires \$2995

'68 CONTINENTAL 4-dr. sedan, full power, a/c, leather interior, 318, 4-speed, p.s., radio \$1895

'68 PONTIAC Bonneville 2-dr. hardtop 400, V-8, automatic, power steering, buckets, console, vinyl roof, power windows \$1295

'68 PLYMOUTH Fury III 4-dr. hardtop, 318, auto., p.s., p.b. \$895

'67 DODGE Polara 4-dr. hardtop, 383 V-8, auto., p.s., white sidewalls, radio \$895

'67 FORD Fairlane 500, 2-dr., V-8, 3-speed, p.s., radio, radial tires \$795

'67 PLYMOUTH Fury III 3-seat wagon, 318, auto., p.s., tinted glass, roof rack, Colorado car, no rust \$995

'66 DART 4-dr. sedan, 6-cyl., 3-speed, radio \$450

'66 PONTIAC station wagon, V-8, automatic, p.s., p.b. \$195

'66 DODGE Coronet 440 4-dr. sedan, 318, auto., p.s., radio \$495

'66 PLYMOUTH Fury II 6-pass. wagon, 318, auto., p.s., p.b., radio, good tires \$695

'65 PLYMOUTH 2-dr. sedan, 318, auto., good tires \$395

'65 DODGE Polara 4-dr. sedan, 383, auto., p.s., p.b., air cond., excellent tires \$995

'64 OLDS 4-dr. sedan \$295

TRUCKS

'69 DODGE D-100, 6-cyl., 3-speed, radio \$1695

'67 DODGE D-200, 318, V-8, automatic, radio \$950

'65 DODGE D-100, 6-cyl., 3 speed \$375

Village Motor Sales, Inc.

IMPERIAL - CHRYSLER
DODGE - PLYMOUTH
Phone 475-8661
1185 Manchester Rd., Chelsea
Hours: 8 a.m. to 6 p.m.
Mon. thru Fri. until 9 Thursday.
9 a.m. to 2 p.m. Saturday

Howell Town & Country, Inc.

HIGHLAND LAKE—2-bedroom log cabin, 50' on the water. New furniture, furniture, boat dock and rowboat. All for \$17,900. ALH-327.

1,800 SQ. FT. BI-LEVEL—Family room 24'x24', living room, 14'x12' with a fireplace. 120' on the water. Pontoon boat and a 35 h.p. Johnson motor. ALH-10169.

WATSON LAKE—Two buildings. One is a sleeping dormitory, second building is 2-bedroom, living room with fireplace, kitchen. Cottage is completely furnished. 40' on the water. Priced at \$21,900. ALH-9994.

ISLAND LAKE near Brighton. For year-round living. Remodeled, glassed-in porch, large living room. 30' on the water. Priced at \$10,200. Land contract available. ALH-102124.

VACANT LOTS available with access to Portage, Patterson, Half Moon and Buck Lakes. Call for information on these properties.

Howell Town & Country, Inc.

Local Representative
CARLIE WIEDMAN
Phone 878-3177
428-3758 evenings

FOR SALE—Dresses, skirts, coats, sweaters, slacks, hand-crocheted vest and hat. Most like new. Misses sizes 5-10, also size 10 maternity clothes. RCA color TV. 1 t works, \$25. 668 Washington, 475-8192.

FOR SALE—'62 Chevy 283, 3-speed on floor. Rebuilt engine and many new parts, including clutch, exhaust, brakes and carburetor. \$225. Call 475-7879 after bureau. \$225. Call 475-8857.

BLUE LUSTRE RUG SHAMPOO

Rent our commercial machine at \$3.00 per day or our homeowners model at \$1.00 per day with purchase of Blue Lustre shampoo.

Chelsea Hardware
Phone 475-1121

WANT ADS

Fireplace Builder

Field stone mason, block and brick mason, tuck pointing.
FREE ESTIMATES
Call 475-8025 after 3 p.m.

Patrick Grammatico

MARY WOLTER REAL ESTATE

23 Years Experience
2421 Dexter-Pinckney Rd.
Dexter, Mich.
426-8138 or 426-8160

3 ACRES (Garden of Eden) 600' road frontage surrounded by state land and wild-life preserve. Near Pinckney. Small rustic home, barn, and other buildings. We are taking offers this week. Shown by appointment only. This property has many beautiful trees, flowers, and organic garden and too many other features to mention.

PATTERSON LAKE privilege two-bedroom, furnished, insulated, carpeted, year-round home. Low taxes. Lot 80'x120'. Price \$28,900.

BASE LINE LAKE near Portage Lake—Large lot with trees, an unbelievable beautiful custom-built home, brick and redwood, 3 bedrooms, kitchen built-ins, carpeting, two ceramic baths, fireplace, marble sills. Clean, safe beach. This home is for a family who appreciates value and location.

HI-LAND LAKEFRONT cottage on hillside. Furnished, nicely decorated, two bedrooms, part basement. \$18,000.

PATTERSON LAKEFRONT with nice beach, village and boat dock. Two bedrooms. Year-round. Carpeted, nicely wood-paneled and papered. Range, refrigerator, washer and dryer included. Low taxes. \$19,000.

ZURRY LAKE LOT near Strawberry Lake. Close to 2100 W. Stadium. Near M-36 and Kress Rd. Natural gas line, good location. Only \$2,000.

SIX ACRES plus, building site. 188' road frontage on county road. 1,452' deep. Near Pinckney. Only \$12,000. Thirty-four acres additions in back if desired with 600 pine trees in one corner of back parcel. Good level land.

BEAUTIFUL 6-BEDROOM home on 62 acres, overlooking Four Mile Lake. Three baths, 25 living rooms. Many many extras. Gently rolling land, or will sell 5- or 10-acre parcel to executive-type home builder at \$1,600 per acre.

ON TRIST ROAD near Clear Lake. Ten or more acre parcels at \$1,500 per or 50-acre parcel.

EDGE OF ANN ARBOR, on beautiful wooded almost-acre lot surrounded by trees. Charming 1-bedroom home with 2-car attached, insulated garage. Aluminum siding. Custom built with finest materials. Bedroom has genuine cherrywood dresser, desk, and bed built in. carpeting, drapes, fireplace, furnace heat. Abundant space to add on. Shown by appointment only. Priced \$30,500.

MARY WOLTER REAL ESTATE

426-8188 or 426-8160

Stock Show Supplies

Show halters, show sticks, scotch combs, line combs, halters, leads, feed pans.

Chelsea Hardware

Phone 475-1121

ATTRACTIVE, LOCAL. Part-time work. Ideal jobs for mothers. Weekly paychecks. Ph. 1-475-3798.

WANT ADS

VACUUM CLEANERS—Electrolux, authorized sales and service. James Cox, Manchester. Ph. 428-2931 or 428-8221.

FOR SALE—Two POA yearlings. Nice. Ph. 475-2579.

FREE REMOVAL DONE—Also buyers of standing timber and walnut trees. Chelsea 475-7681.

THE LITTLE FLOWER SHOP

8451 Waltrous Rd., Chelsea
Phone GR 5-8506

Sponsoring Welcome Wagon in Chelsea, Dexter areas.
Flowers, corsages, arrangements and plants.

Weddings and funerals.

TRAVEL TRAILERS—13-ft. and up, 10x55 ft. trailers. John R. Jones Trailer Sales, Gregory, Mich. Phone 498-2655.

SEE US for transit mixed concrete. Klumpke Bros. Gravel Co. Phone Chelsea 475-2530, 4920 Loveland Rd., Grass Lake, Mich. x401f

Custom Kitchen Cabinets and Formica Tops

Made to Order
475-2857

1967 CHEV BISCAYNE 2-dr., 6-cyl., std. trans. \$595. Gold Crest warranted (12 mos., no limitation on mileage). Devon Lincoln-Mercury, 2100 W. Stadium, Ann Arbor. Ph. 662-5555.

PITTSBURGH
HOUSE PAINT SALE
Latex or Oil Base
\$7.13 gal.

WANT ADS

WANTED — Responsible man for gas station at Rte. 1, Box 100, in Chelsea. Call 475-7978 or 475-7979. x2tf

NOW — Join the oldest Toy Party Plan in the Country. 30th Anniversary. Call or write SANTA'S, 123 Avon, Conn. 06001. Tel. (203) 673-3455. Also booklets. x6

SALE — Rustic cottage at Lake. Call 475-7978 or 475-7979. x2tf

SALE — Inlaid vinyl and lin. Also tile. Armstrong and leum. Installed by craftsmen. Estimates, terms. Bros. 475-8621. x2tf

RT PATRICK for home improvement, building and maintenance. Ph. 428-8501. x2tf

SOMETHING NEW

ow have special trained crews for ALL TYPES of SIDING and ROOFING. T OUR FREE ESTIMATE" PHONE 475-1389

LaFontaine Construction Development Corp. LICENSED BUILDERS Chelsea

USE FOR SALE — By North hool, Chelsea. Tri-level, 1,800 sq. ft., completely landscaped, carport and detached patio gas grill, 3 to 4 bedrooms, 1 1/2 baths, dining room, built-in kitchen, dinette, family room, utility area, 2 1/2-car garage. Lane. d. Call 475-7281. x2tf

INCHING — 4" to 16" wide, 0' to 6' depth, footings, drain lines, er and electrical lines. Will in. l. Ph. 475-7611. x7

DDINGS — ANNIVERSARIES, r any occasion. We can furnish printing. Call John's Shop evn- ings and week-ends. 475-7500. -6

DUCE EXCESS FLUIDS with ludez \$1.69 — Lose weight safe- with Dex-A-Diet, \$1.98 at Chel- Drug. -12

R RENT — Roomy cottage on North Lake. By the week or th. Call 475-7978 or 475-2096. x2tf

R SALE — Travel trailer, ice x, stereo, sink, 2 bunks, \$500. -2403. x6

WANT ADS

PROFESSIONAL CARPET clean- ing service expanding to Wash- tenaw county. All sizes and types of carpets cleaned, day or night. Call 428-7269 or (517) 522-4337 for free estimate. x2tf

SKIN DISORDERS? Try Toco- Derm Vitamin E Cream, 1200 IU per tube at Chelsea Drug. -16

FOR SALE By Owner — Immaculate 3 bedrooms, 1 1/2 baths, drapes and carpet throughout, basement with shower, fenced yard with shade trees. Garage. 475-8834 after 5 p.m.; anytime week-ends. -8

CLEARANCE

SWIM SUITS — 1/2 Price GRAFF SHORTS — \$5.00 ALL SUMMER PANT SUITS — Reduced

GIRLS' JEANS — \$6.95 & \$7.95 SHOES, TENNIS SHOES — \$3.00 Odds and ends — Reduced

SUMMER DRESSES — Reduced HALF-SIZE DRESSES — Coming Soon

PATTY ANN SHOPPE

118 S. Main, Chelsea x6

"CLEARANCE"

New 1972 Chevrolet 9 pass. station wagons

5 to choose from. Air Conditioned Power Steering Power Disc Brakes Tinted Glass

up to \$1,000 Discount

THURS. - FRI. - SAT. ONLY

Frank Grohs Chevrolet

7120 Ann Arbor Rd. Dexter 426-4677 x6

REPAIR SERVICE for household refrigerators, freezers and gar- bage disposers. Call Bill, 426-8314. -x7tf

FOR SALE — 1970 Dodge Challenge R/T, 383, 4-speed, 3.51 posi-traction, factory mag- vinyl roof, spoiler, power disc brakes, A.M., F.M. stereo, radio with power antenna, and more. \$1,700. Ph. 1-517-851-8339. Stockbridge. -6

WANT ADS

FIVE BEDROOM HOUSE for sale in Dexter, just off Baker Rd. Close to schools. Ph. 428-4066 any time after 4:30 p.m. x6

FOR SALE — Male Dalmatian, 9 months old, with papers. Ph. 475-2172. -x6

Special of the Week 1971 Electra 225 4-dr. Vinyl top air cond. Like new — \$4195

USED CARS

1969 Electra 4-dr. (air cond.), vinyl top — \$2495

1969 Chrysler Newport 2-dr., air cond. — \$1895

1969 Dodge Monaco 4-dr. Brough- am, full power (air cond.) — \$1795

1969 Pontiac Catalina 2-dr. hard- top. Vinyl top. Clean — \$1895

1968 Buick LeSabre 2-dr. Vinyl top. Clean — \$1495

1968 Chev Impala 4-dr. sedan \$1195

1967 Pontiac Catalina Sta. Wagon (air cond.) — \$995

1967 Mercury 2-dr. hardtop \$ 895

1967 Pontiac Tempest station wagon — \$895

1966 Buick Special 4-dr. — \$ 595

1966 Plymouth station wagon \$ 495

1965 Olds 98 Luxury Sedan, full power, (air cond.) — \$ 795

1963 Ford Galaxie 500 4-dr. One owner. Clean. — \$ 495

1963 Buick LeSabre 4-dr. — \$ 195

1964 Chev Impala 2-dr. hardtop — \$ 195

1962 Volkswagen sunroof — \$295

1962 Olds 88 2-dr. hardtop — \$ 95

SPRAGUE

Buick-Olds-Opel, Inc. 1500 S. Main St., Chelsea Phone 475-8664 x6tf

Gar-Nett's Flower Shop and Gifts COMPLETE FLORAL SERVICE Friendly Personal Service PHONE 475-1400

Hours 9 a.m. to 5:30 p.m. Monday thru Friday. Saturday 9 a.m. to 12 noon. x6tf

LOVE TO SEW? Become a demon- strator for Creative Directions. Teach others the fun of sewing with knits. Receive free fabrics and com- missions. For further details, call Ypsilanti, 1-434-3538. x11

FOR SALE — '65 Dodge 1/2-ton pick-up. Excellent running, con- dition. Ph. 475-7161. x6

FOR SALE — '65 Chev. Super Sport p.s., p.b., auto. Must sell, \$200. Ph. 475-2820. -7

WANT ADS

TWO GIRLS BIKES — 20" in. Schwinn. Very good condition. 682-0524. x2tf

MY GARAGE won't hold it all. Would like to rent storage space in or near Chelsea. Ph. 475-8173 or 475-6601. x4tf

MARSHALL REALTY 440 Dexter Road Pinckney, Michigan 1-313-878-3182

STOCKBRIDGE — A 4-bedroom farm home, large barn, on 17 acres, blacktop road. \$45,000.00 on land contract.

DEXTER — A lovely 3-bedroom contemporary home, beautifully landscaped with secluded patio and 70-ft. water frontage on Portage Lake. \$35,900.00.

CHELSEA — On 6 acres, an older 5-bedroom, partially remodeled home, good horse barn and other small outbuildings. Chelsea schools. \$40,000.00. More acreage available.

PINCKNEY — 2 years old, 3-bed- room, all-electric home, fully carpeted, ceramic tile bath, bright utility room with humidity control, glass door wall off dining area. Ex- cellent condition. 1 1/2-acre garage on corner lot in Village. \$24,900.00.

CHELSEA — An ideal 6-acre build- ing site with nice roll, close to blacktop road. Surveyed. \$9,000.00 on land contract with \$2,500.00 down. 6 miles from Chelsea.

WRITE OR CALL for our free brochure covering our many de- sirable listings of farms, lake prop- erties, building sites and residential properties.

REALTY MARSHALL

440 Dexter Road Pinckney, Mich. 1-313-878-3182 Evelyn, 475-8283 Dave, 475-7275 JoAnn, 475-7493 x6

GARAGE SALE — Electric guitar, amp, also folk guitar, misc. items. 14017 Ridgmont Dr., Half Moon Lake. Ph. 475-2877. Friday and Saturday, Aug. 4-5. x7

M & M GRAVEL CO. PAUL MOFFAT 7 miles north of Chelsea, corner of M-52 and Roe Rd. 498-2866

Processed road and driveway grav- el, fill dirt, washed sand, pe- stone, top soil, drainfield stone. Mason sand available for our own deliveries only. Loading 6 days from 6 a.m. to 6 p.m. F.O.B., or de- liveries. Free estimates on road and driveway building. x9

FOR SALE, By Owner — 3 b.d. room; full basement. 611 N. Main St. Ph. 475-7186. x6

WANT ADS

PIANO WANTED — Must be in good condition. 475-2186 p.d.s. 10-11 p.m. x2tf

Fresh Vegetables For Sale at corner of Waterlot & Werkner Rds. Known as

FERRY'S STAND Open Aug. 4

IZZY WENCEL

Country Living BUILDING SITES — 30 to choose from, ranging from 1 to 16 acres parcels, located throughout the Chelsea school area.

100 ACRES — 4-bedroom remodeled Early American farm home, good outbuildings, excellent soil, creek flows through property year round.

240 ACRES — 4-bedroom farm home, located 4 miles south of 1-54 on M-52. Large level fields. Some of the best soil in Washtenaw county. (Good barns, stream, Chelsea schools.)

12 ACRES — Blacktop road, 1 mile from Chelsea, hilltop setting, 1,800 sq. ft. fireplace, dining room, family room, 2-car attached gar- age. Glassed-in porch, 15 minutes from Ann Arbor.

1 1/2 ACRES — Quality brick and frame, 3 bedrooms, 5 seasons central air conditioning, 3 full baths, family room, fireplace, 3 years old. 2-car attached garage and heated shop or hobby building. Chelsea schools.

Village of Chelsea 3-BEDROOM, 1 1/2 baths, 3-plus car garage. Central location. Excel- lent condition. Immediate posses- sion.

18,000 SQ. FT., 4-bedroom, dining room, quiet street, screened-in front and rear porches. \$33,900.

Cottages SWEETZEE LAKE — 1 bedroom, \$10,500. Lake access.

SUGAR LOAF LAKE — 4 bedrooms, year round. Lake front.

CAVANAUGH LAKE — 2 bed- rooms, year round. Lake front.

Erisinger Realtors Chelsea 475-8881

Evenings: Hope Bushnell - 475-7180 Paul Frisinger - 475-2621 Herman Koenn - 475-2613 George Frisinger - 475-2903 x6tf

FOR SALE '67 CHEV IMPALA CONVERTIBLE

327 V-8 engine, power steering, power brakes, power windows, good tires, tilt steering wheel. Make offer above \$700.

Call 475-7435 or 475-4811

CLEANING LADY WANTED — Must be conscientious and a self- starter. 475-2185 persistently. x6tf

RESPONSIBLE businessman and family seek rental of home in Chelsea-Dexter area. Call 971-8813. x6

ORGANICALLY GROWN green beans, you pick, \$4.50 a bushel. We pick, \$5.25 a bushel. McKin- Rd. 475-4792. -6

WANT ADS

WANTED — Youth size saddle, off large pony saddle. Call 475-5751. x6

FREE TO GOOD HOME — Little kitten. Ph. 475-8470. x6

FARM AUCTION

FARM MACHINERY & TRUCK GARDEN EQUIPMENT

Having sold my farm, I will sell the following at public auction. Lo- cated at 2306 Hannan Road, Wayne, Michigan. 3 miles west of Wayne, just north of Michigan Ave.

Sunday, July 30 at 1 p.m.

1970 1 1/2-ton Ford stake truck, No. 500, 12' body with grain rack, 8,000 miles; John Deere 3010 gas tractor, 1,400 hours, power steering and brakes; John Deere 3-16' mtd. plow; John Deere H tractor and 2-row hydraulic cultivator with ferti- lizer attachment; John Deere 10' wheel disk; John Deere mounted corn picker, 227; No. 35 Massey- Harris self-propelled combine; grain auger; Planter 4-row seeder; mtd. buzz saw, 3-pt.; 2-row Ford cultivator; 2 McCurdy hopper boxes with running gear; 12-ft. sprayer; Ford 3-pt. rotary mower; wagon with flat rack; 12-ft. drag; 9-ft. drag, 3-pt.; grain elevator on rub- ber; John Deere 2-row corn plant- er, 3-pt.; rotary hoe, 3-pt.; culti- packer; slip scoop; 10-row sprayer; John Deere 13-hoe grain drill; John Deere 12-ft. lime spreader; grass seeders; 4-row garden cultivator wheelbarrow; duster; Feun root washer; 4-wheel hand truck; 120 hot house sash; 25 cold frames; Buffalo turbine sprayer; New Idea transplanter; hand dusters; Kemp soil shredder, hot water furnace; stoker & circulating pump; Holland transplanter; bunch washer; riding lawnmower; chain saw; 9 100-ft. corn cribs; 1 barn to be removed; quantity of good miscellaneous items. This machinery has been under cover and is in excellent condition.

Inspection day of sale. Arrange fi- nancing before sale. Nothing re- moved until settled for. Not respon- sible for accidents. Lunch on the grounds.

Terms: Cash or Check

OWNER — EARL DASHER

LLOYD R. BRAUN Ann Arbor 665-9646

JERRY L. HELMER Plymouth 453-4109

MAX Ziegler, Jr., Clerk

FOR SALE — '69 Chevrolet Impala 2-door sports coupe. Automatic, power steering, radio, 55,000 miles. Garage car, in excellent condition. \$1,300. Call after 6 p.m. 428-5538. x6

FOR SALE — Ford F-100 pick-up. Two fifth-bikes. Ph. 475-2579. x6

FOR SALE — Beans, beets, corn. Other vegetables coming. 2100 McKernan Dr., corner of I-94 and M-52. Ph. 475-7989. -6

FOR RENT — One bedroom apart- ment. Ph. 475-7698. -6

IDEAL FOR COTTAGE or second stove, 30-inch electric range with base cabinet and exhaust fan. Rea- sonable. 475-8883. -7

FREE PUPPIES — Call after 5 p.m., 663-4356. -6

FOR SALE — White, 40" gas range. Use bottle or natural gas. \$50. 475-1209. -6

IF carpets look dull and drear, remove spots as they appear with Blue Laure. Rent electric shampooer \$1. Dancer's. -6

FOR RENT — 10'x35' trailer, 2- bedroom, partly furnished. 1 child only. Green Lake. Ph. 475-2893. x6

FREE PUPPIES! 8 weeks old. All are cute. Second house on Jeannette Dr., Chelsea. Ph. 475-2221. x6

FOR SALE — Two Ford carbure- tors, both brand new. Holly 4-bbls. \$31. Carter 2 bbls., \$21. Ph. 475-8223. x6

FOR SALE — '68 Atlas mobile home, 50'x12', very good con- dition, partially furnished, skirting, must sell. Must be moved. \$2,560. Must see. Call after 6:30 p.m. 971-3197. x8

WANT ADS

1966 FORD — Automatic, radio. Ph. 1-227-5197. x6

FOR SALE — 1967 Chev. Im- pa 3-speed automatic. Good condition. Runs good. \$700. Call 475-1283. x6

FOR SALE — 55-gallon steel drums at \$2.50 each. Ph. 473-1331, ext. 60. x7

LITTLE OLD LADY want to sell 1968 Pontiac Executive, full power, air conditioning, 1 owner, low mileage. \$1,200. Ph. 426-3387. x6

GARAGE SALE — After 5:30 dur- ing week and all day Saturday and Sunday. 30' wooden office desk, receptionist desk, 2 chairs, window refrigerator unit, old re- frigerator still runs, wooden ex- tension ladder, used bathroom la- vatory, etc. 513 Wilkinson, Chel- sea. x6

PUPPIES. FREE! Mother is Ger- man Shepherd and Collie. Father is Dalmation. Also free kit- tens. Phone 475-8396. x6

SENIOR TYPIST needed for tem- porary assignments. Gerry Rush- ing Temporary Help Service, 3800 Packard. 971-1631. x6

WANT ADS

DENTAL ASSISTANT — Full time, in Dexter. Experience pre- ferable. 428-8292. x6

GARAGE SALE — Clothes, toys, household items. July 28-29, Fri., 12-5, Sat., 10-5. 40 Butter- nut Ct., Chelsea. -x6

FOR SALE — International H tractor, cultivator, loader with hydraulic lift and buzz rig. All in good condition. Call 475-4083 after 6 p.m. -x6

NORTH LAKE United Methodist church Country Fair, Saturday, August 5. Games, flea market, bake sale and bazaar items. Lunch starting at 11 a.m. Supper start- ing at 5 p.m. -x7

DISCOUNTS

Fantastic savings on all fishing tackle, rods and reels at:

Elmer's Place

13392 North Lake Rd. on North Lake x7

TODAY'S THOUGHT

By LOUIS BURGHARDT

A doctor can give you a pill for almost any ailment. Aches, pains, disorders can often be relieved but permanent cures rarely result from any pill. Pills at best, bridge a gap in time, from one time to the next. This fact of life is especially true for the thousands of shut-ins in nursing homes, hospitals, state hospitals and bedrooms in many private homes.

They live alone and isolated — even while among other people. Theirs is a sad world. Many of these people need more than pills. They desperately need the concern of other people. They need to know they are not alone in their suffering. Cards, letters and flowers are fine — but nothing can match a friendly, cheerful personal visit. Through visitation the confined can often strengthen their faith and spirit . . . If you know some one who is ill, why not extend the kindness of a personal visit — soon? Why procrastinate? Tomorrow may be too late . . .

BURGHARDT FUNERAL HOME, 214 East Middle St., Chelsea, Mich. Phone 475-4141.

Terms: Cash or Check

LLOYD R. BRAUN Ann Arbor 665-9646

JERRY L. HELMER Plymouth 453-4109

MAX Ziegler, Jr., Clerk

FOR SALE — '69 Chevrolet Impala 2-door sports coupe. Automatic, power steering, radio, 55,000 miles. Garage car, in excellent condition. \$1,300. Call after 6 p.m. 428-5538. x6

FOR SALE — Ford F-100 pick-up. Two fifth-bikes. Ph. 475-2579. x6

FOR SALE — Beans, beets, corn. Other vegetables coming. 2100 McKernan Dr., corner of I-94 and M-52. Ph. 475-7989. -6

FOR RENT — One bedroom apart- ment. Ph. 475-7698. -6

IDEAL FOR COTTAGE or second stove, 30-inch electric range with base cabinet and exhaust fan. Rea- sonable. 475-8883. -7

FREE PUPPIES — Call after 5 p.m., 663-4356. -6

FOR SALE — White, 40" gas range. Use bottle or natural gas. \$50. 475-1209. -6

IF carpets look dull and drear, remove spots as they appear with Blue Laure. Rent electric shampooer \$1. Dancer's. -6

FOR RENT — 10'x35' trailer, 2- bedroom, partly furnished. 1 child only. Green Lake. Ph. 475-2893. x6

FREE PUPPIES! 8 weeks old. All are cute. Second house on Jeannette Dr., Chelsea. Ph. 475-2221. x6

FOR SALE — Two Ford carbure- tors, both brand new. Holly 4-bbls. \$31. Carter 2 bbls., \$21. Ph. 475-8223. x6

FOR SALE — '68 Atlas mobile home, 50'x12', very good con- dition, partially furnished, skirting, must sell. Must be moved. \$2,560. Must see. Call after 6:30 p.m. 971-3197. x8

FOR SALE — '68 Chev. Super Sport p.s., p.b., auto. Must sell, \$200. Ph. 475-2820. -7

FOR SALE — 1970 Dodge Challenge R/T, 383, 4-speed, 3.51 posi-traction, factory mag- vinyl roof, spoiler, power disc brakes, A.M., F.M. stereo, radio with power antenna, and more. \$1,700. Ph. 1-517-851-8339. Stockbridge. -6

FOR SALE — Rustic cottage at Lake. Call 475-7978 or 475-7979. x2tf

SALE — Inlaid vinyl and lin. Also tile. Armstrong and leum. Installed by craftsmen. Estimates, terms. Bros. 475-8621. x2tf

WANTED — Responsible man for gas station at Rte. 1, Box 100, in Chelsea. Call 475-7978 or 475-7979. x2tf

WANTED — Youth size saddle, off large pony saddle. Call 475-5751. x6

WANTED — Must be in good condition. 475-2186 p.d.s. 10-11 p.m. x2tf

Wanted — Rustic cottage at Lake. Call 475-7978 or 475-7979. x2tf

Wanted — Inlaid vinyl and lin. Also tile. Armstrong and leum. Installed by craftsmen. Estimates, terms. Bros

The Serviceman's Corner

Eugene W. Koch
On Destroyer Training
In Hawaiian Area

USS Wallace L. Lind—Navy Fireman Eugene W. Koch, son of Mrs. Jean Ritter of 9053 Pettysville Rd., Pinckney, Mich., is a crewmember of the destroyer USS Wallace L. Lind, which has just completed training exercises in Hawaiian waters.

His ship, homeported at San Francisco, also expects to sail soon for Washington for the Sea-View Seafair.

Pinckney Area Youth
Completes Navy
Hospital Corps School

Great Lakes, Ill.—Navy Hospitalman Apprentice Rick R. Krahn, son of Mr. and Mrs. Reginald Krahn of 7310 Farley Rd., Pinckney, Mich., has completed the Hospital Corps School at Great Lakes.

Hospital Corpsmen assist doctors and nurses in every phase of medical service including X-ray, laboratory work, operating room assistance and general practice.



Washington Report
by Congressman
MARVIN L. ESCH

All too often, we think of the needs of senior citizens only in terms of increasing Social Security benefits. To be sure, poverty is more prevalent among senior citizens than any other age group and inflation hits hardest at those on fixed incomes. The recent Social Security increase was, therefore, vital in improving living conditions for older Americans.

However, our concern for senior citizens must not stop there. There are a broad range of other services and programs which also deserve attention. I was pleased, therefore, when the House passed the Older Americans Act of 1972 which I originally introduced more than a year ago. This is an omnibus bill which covers numerous federal programs for senior citizens.

Perhaps the most important provision of the legislation is the creation of a President's Committee on Aging and the elevation of the Office on Aging to a full Sub-cabinet status in the Department of Health, Education and Welfare. This insures that senior citizens will have an active advocate for their concerns at the highest levels of government.

Additionally, the legislation greatly expands research on the problems of aging, through the new National Institute of Aging in the National Institute of Health. Particular attention will be devoted to making the retirement years more rewarding both mentally and physically.

One of the best programs for senior citizens in recent years has been the Foster Grandparents Program through which senior citizens serve as assistants in children's wards at hospitals, mental health centers, etc. This program has been expanded by my bill. Another equally vital program for seniors was also an outgrowth of legislation I introduced in 1966, which established an Institute on Gerontology at the University of

Michigan. This has developed into a competent state agency and has proven invaluable.

I firmly believe that it is legislation such as these which will help us meet our goal to create an atmosphere in which senior citizens can continue to lead contributing and fulfilling lives. This latest bill is a further step which moves us well along toward that goal.

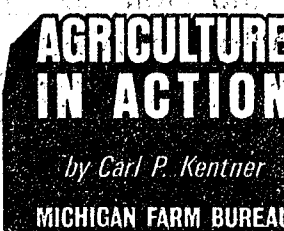
Road Rally Slated Saturday in Ypsilanti

Excitement and fun is in store for those who participate in a road rally this Saturday, July 29, in Ypsilanti.

The rally begins at the entrance to the Ypsilanti Armory, 1025 S. Huron. Starting cars leave at 10 a.m., and the last will depart at 12 noon.

Prizes will be awarded to participants. Winners of drawings need not be present for gifts. For tickets or more information, phone Carol Stoll, 475-7424, or Rita Denoyer, 426-8914.

Last year Americans ate 100,000 tons of yogurt, about one third more than they ate in 1969, and six times the amount consumed twenty years ago.



★ Meeting the Need

Most of mankind's scientific progress has been made in the past 100 years. In fact, more than 50 percent of the scientists the world has known are alive today. With the beginning of the industrial revolution in our country, farmers for the first time in history were offered modern agricultural tools. As the farm industry of our nation grows, its need for new developments grows also.

Our nation's agriculture is engaged in a battle for survival. The outcome of this battle centers on a farmer's ability to use his resources, land and money to make an adequate income to sustain himself and expand his operation. Money must be available to pay for feed, seed, fertilizer and equipment.

Today, more than ever before, incentive technique plays a basic role in the development of farm machinery. Giant corporations earmark millions of dollars each year for research and development of new equipment for the agricultural industry. What is not generally disclosed, however, is that the individual inventor, the farm shop mechanic and the basement workshop handyman, are contributing greatly toward farm implementation. Each year, equipment manufacturers are focusing more attention on this source for new ideas.

With our agricultural productivity taking an increased international scope in recent years, the search for new developments has been intensified.

It is not surprising to discover that many of the new farm practices, ideas and equipment have been devised by farmers. Ideas came largely from necessity or a means to cut costs.

Farmers have helped develop new pickers, shakers, sprayers, soil conditioners, sprinklers, weeders, diggers, dusters and many more, and, in most cases, because what was available to them at the time did not quite meet their specific needs.

The Safety Valve

Question: Wouldn't it be a good idea to have different colored edge markings on the ramps that are entering and leaving our freeways? At freeway speeds every little advantage means a lot to a motorist, especially in strange territory.

B. N., Concord.
Answer: Our Michigan Department of State Highways engineers experimented with this same theory to expedite traffic flow. They used bright colored edge markings—yellow for entrance ramps to the freeway and blue for ramps leaving the freeway. This experiment was done on US-23 north of Brighton. It had nothing to do with the University of Michigan!

The results of this study were inconclusive, so expanded use of different colored edgelines on ramps is doubtful.

Question: I want my buddy to ride on my bicycle with me so we can go to the park and play basketball, but his mom says it's against the law. Is it? J.L.T., southfield.

Answer: Rules say no bicycle shall be used to carry more persons at one time than the number for which it was designed and equipped. With only five blocks to go, you can take turns jogging along behind and keeping trim for all sports activities.

Question: The National Highway Traffic Safety Administration report said Michigan should have legislation requiring quantitative blood alcohol tests on all drivers and adult pedestrians (deceased and surviving) in fatal traffic accidents. What good is this going to do after the people are dead? They're too late to be rehabilitated then! O.R.S., Fair Haven.

Answer: This information is necessary to find out the extent of alcohol involvement in fatal crashes so that administrators can judge the effectiveness of the various traffic accident countermeasures used to lower the involvement of alcohol in crashes. Also, this information is most helpful in convincing responsible officials of the size and seriousness of the problem.

Two other related provisions are being sought. One—that evidence of the defendant's refusal to submit to the chemical test be admissible in criminal proceedings for the alcohol driving offense; two—that a dead, unconscious, or otherwise incapable person shall be deemed not to have withdrawn his

Telephone Your Club News
To GR 5-3581.

Flammability Standards Expected for Mattresses

Mattress fires cause many deaths each year in the United States. Many of the deaths are caused by people smoking in bed. Mattress fires have also been a major source of fires that sweep through homes and apartments. Mattress fires, hopefully, may become a thing of the past next year, when a federal flammability standard is expected to go into effect.

Bedding industry spokesmen say the new standard will probably force the bottom-of-the-line mattresses off the market, since it will be impossible for them to meet the flammability requirements. There may be another result of the flammability standard, Mattress-makers think that the increased production costs of the non-flammable mattress will lead to separate prices for twin and full-size mattresses. Most people, however, feel that the safety involved will be worth the price difference.

Farm-Related Jobs

Although less than 10 percent of the people live on farms today, it's estimated that about 40 per cent of all jobs in the United States are related somehow to agriculture. Related fields include marketing, processing and transportation of food products, plus the manufacturing and distribution of equipment and services needed by the modern farmer.

GENERAL PRIMARY ELECTION

To The Qualified Electors:

NOTICE IS HEREBY GIVEN,

That a General Primary Election will be held in the

TOWNSHIP OF SHARON

(Precinct No. 1)

STATE OF MICHIGAN

At

SHARON TOWNSHIP HALL

Corner Pleasant Lake Rd. and Sylvan Rd.

Within said Township on

TUESDAY, AUGUST 8, 1972

For the purpose of placing in nomination by all political parties participating therein, candidates for the following offices, viz:

CONGRESSIONAL U. S. Senator,
Representative in Congress

LEGISLATIVE Representative

COUNTY Prosecuting Attorney, Sheriff, County Clerk, County Treasurer, Register of Deeds, Drain Commissioner, Coroners, Surveyor, County Commissioner and such other Officers as are elected at that time.

TOWNSHIP Supervisor, Clerk, Treasurer,
1 Trustee, 2 Constables.

AND FOR THE PURPOSE OF PLACING IN NOMINATION, CANDIDATES PARTICIPATING IN A NON-PARTISAN PRIMARY ELECTION FOR THE FOLLOWING OFFICES, VIZ:

JUDGE OF THE COURT OF APPEALS

CIRCUIT COURT JUDGE

PROBATE COURT JUDGE

DISTRICT COURT JUDGE

AND ALSO TO VOTE ON THE FOLLOWING:

Proposed constitutional amendment to allow trial by a jury of less than twelve jurors in all prosecutions in all courts for misdemeanors punishable by imprisonment for not more than one year.

AND ALSO TO VOTE ON THE FOLLOWING PROPOSITION:

Proposal to raise millage from ¼ mill to ½ mill for Huron-Clinton Metropolitan Authority.

COUNTY TREASURER'S STATEMENT

(As required by Act 293, Public Acts of Michigan 1947.)

I, Sylvester A. Leonard, County Treasurer of the County of Washtenaw, State of Michigan, do hereby certify that, according to the records of this office, as of July 7, 1972, the total of all voter increases in the tax rate limitation, above the 18 mills established taxable property in Sharon Township, Washtenaw County, State of Michigan in said Township is as follows:

LOCAL UNIT	VOTED INCREASE	INCREASE EFFECTIVE
County of Washtenaw	None	
Sharon Township	None	
Washtenaw Community College	2 1/4 Mills	1972-1975 Incl.
Washtenaw Co. Intermediate School District	1 Mill	1972 and future years
Jackson Co. Intermediate School District	1 1/4 Mills	1972 only
Chelsea School District	10.08 Mills	1972-1973 Incl.
Grass Lake Community School District	17 Mills	1972 only
Manchester Public Schools District	11 1/2 Mills	1972 only
Napoleon Rural Agriculture School District	None	
Ann Arbor, Michigan	s/ SYLVESTER A. LEONARD	
July 7, 1972	Washtenaw County Treasurer.	

Also Any Additional Amendments or Propositions That May Be Submitted.

Notice Relative to Opening and Closing of Polls

ELECTION LAW, ACT 116, P. A. 1954

SECTION 720. On the day of any election the polls shall be opened at 7 o'clock in the forenoon, and shall be continuously open until 8 o'clock in the afternoon and no longer. Every qualified elector present and in line at the polls at the hour prescribed for the closing thereof shall be allowed to vote.

THE POLLS of said election will be open at 7 o'clock a.m. and will remain open until 8 o'clock p.m. of said day of election.

Duane Haselschwerdt, Township Clerk

Water Lawn At First Sign Of Wilting

East Lansing—Lawns should be watered at the first sign of wilting, wetting the soil to a depth of 6 to 8 inches, say Michigan State University turfgrass specialists.

But don't apply too much water too often, they advise. Overwatering can kill roots and weaken the turfgrass plant by eliminating their supply of oxygen.

To help insure a healthy lawn, the MSU specialists offer the following guidelines for watering.

—When establishing a turf, water at midday every day. This applies to both seeded and sodded turf.

—Water an established lawn infrequently and thoroughly at the first sign of wilt. Watering lightly at frequent intervals causes shallow root growth and weakened turf that is more susceptible to weed invasion.

—Do not apply water faster than it can be taken in by the soil. Sloping areas require more frequent watering.

—Water sandy soils more frequently because of their high porosity and low moisture retaining capacity.

Bowling Winners

(Continued from page one)

Mrs. Chapman, who bowls with the Wednesday night early league at Chelsea Lanes, traveled with the team to bowl in Pontiac the last week-end in April. The tournament spanned the first week-end in March to the second week-end of June, and teams from all over the state were scheduled for a week-end of bowling.

Mrs. Chapman remarked, "I haven't bowled regularly in years. This was the first year that I've played on a team, and this was the first time that I'd played in a tournament as a regular member of the team. I guess I just had a lucky night."

Mrs. John (Phyllis) Harook, 1216 Sugar Loaf Lake, was the only other member of the team to receive money, winning \$45 for her score in singles.

TRICKY RIVER!

Africa's 2,700-mile Zaire River, until recently known as the Congo, has 4,000 islands, some so large, wooded, and close together that boatmen may become lost in the maze of channels.



Now Available at

The Chelsea Standard

GENERAL PRIMARY ELECTION

To The Qualified Electors:

NOTICE IS HEREBY GIVEN,

That a General Primary Election will be held in the

TOWNSHIP OF SYLVAN

(Precinct No. 1 and 2)

STATE OF MICHIGAN

At

Sylvan Township Hall

Within said Township on

TUESDAY, AUGUST 8, 1972

For the purpose of placing in nomination by all political parties participating therein, candidates for the following offices, viz:

CONGRESSIONAL U. S. Senator,
Representative in Congress

LEGISLATIVE Representative

COUNTY Prosecuting Attorney, Sheriff, County Clerk, County Treasurer, Register of Deeds, Drain Commissioner, Coroners, Surveyor, County Commissioner and such other Officers as are elected at that time.

TOWNSHIP Supervisor, Clerk, Treasurer,
1 Trustee, 2 Constables

AND FOR THE PURPOSE OF PLACING IN NOMINATION, CANDIDATES PARTICIPATING IN A NON-PARTISAN PRIMARY ELECTION FOR THE FOLLOWING OFFICES, VIZ:

JUDGE OF THE COURT OF APPEALS

CIRCUIT COURT JUDGE

PROBATE COURT JUDGE

DISTRICT COURT JUDGE

AND ALSO TO VOTE ON THE FOLLOWING:

Proposed constitutional amendment to allow trial by a jury of less than twelve jurors in all prosecutions in all courts for misdemeanors punishable by imprisonment for not more than one year.

AND ALSO TO VOTE ON THE FOLLOWING PROPOSITION:

Proposal to raise millage from ¼ mill to ½ mill for Huron-Clinton Metropolitan Authority.

COUNTY TREASURER'S STATEMENT

(As required by Act 293, Public Acts of Michigan 1947.)

I, Sylvester A. Leonard, County Treasurer of the County of Washtenaw, State of Michigan, do hereby certify that, according to the records of this office, as of July 7, 1972, the total of all voter increases in the tax rate limitation, above the 18 mills established taxable property in Sylvan Township, Washtenaw County, State of Michigan in said Township is as follows:

LOCAL UNIT	VOTED INCREASE	INCREASE EFFECTIVE
County of Washtenaw	None	
Sylvan Township	None	
Washtenaw Community College	2 1/4 Mills	1972-1975 Incl.
Washtenaw County Intermediate School District	1 Mill	1972 and future years
Chelsea School District	10.08 Mills	1972-1973 Incl.
Ann Arbor, Michigan	s/ SYLVESTER A. LEONARD	
July 7, 1972	Washtenaw County Treasurer.	

Also Any Additional Amendments or Propositions That May Be Submitted.

Notice Relative to Opening and Closing of Polls

ELECTION LAW, ACT 116, P. A. 1954

SECTION 720. On the day of any election the polls shall be opened at 7 o'clock in the forenoon, and shall be continuously open until 8 o'clock in the afternoon and no longer. Every qualified elector present and in line at the polls at the hour prescribed for the closing thereof shall be allowed to vote.

THE POLLS of said election will be open at 7 o'clock a.m. and will remain open until 8 o'clock p.m. of said day of election.

DANIEL J. MURPHY, Township Clerk

GENERAL PRIMARY ELECTION

To The Qualified Electors:

That a General Primary Election will be held in the

NOTICE IS HEREBY GIVEN,

TOWNSHIP OF LYNDON

(Precinct No. 1)

STATE OF MICHIGAN

At

Lyndon Township Hall

Within said Township on

TUESDAY, AUGUST 8, 1972

For the purpose of placing in nomination by all political parties participating therein, candidates for the following offices, viz:

CONGRESSIONAL U. S. Senator,
Representative in Congress

LEGISLATIVE Representative

COUNTY Prosecuting Attorney, Sheriff, County Clerk, County Treasurer, Register of Deeds, Drain Commissioner, Coroners, Surveyor, County Commissioner and such other Officers as are elected at that time.

TOWNSHIP Supervisor, Clerk, Treasurer,
1 Trustee, 1 Constable

AND FOR THE PURPOSE OF PLACING IN NOMINATION, CANDIDATES PARTICIPATING IN A NON-PARTISAN PRIMARY ELECTION FOR THE FOLLOWING OFFICES, VIZ:

JUDGE OF THE COURT OF APPEALS

CIRCUIT COURT JUDGE

PROBATE COURT JUDGE

DISTRICT COURT JUDGE

AND ALSO TO VOTE ON THE FOLLOWING:

Proposed constitutional amendment to allow trial by a jury of less than twelve jurors in all prosecutions in all courts for misdemeanors punishable by imprisonment for not more than one year.

AND ALSO TO VOTE ON THE FOLLOWING PROPOSITION:

Proposal to raise millage from ¼ mill to ½ mill for Huron-Clinton Metropolitan Authority.

COUNTY TREASURER'S STATEMENT

(As required by Act 293, Public Acts of Michigan 1947.)

I, Sylvester A. Leonard, County Treasurer of the County of Washtenaw, State of Michigan, do hereby certify that, according to the records of this office, as of July 7, 1972, the total of all voter increases in the tax rate limitation, above the 18 mills established taxable property in Lyndon Township, Washtenaw County, State of Michigan in said Township is as follows:

LOCAL UNIT	VOTED INCREASE	INCREASE EFFECTIVE
County of Washtenaw	None	
Lyndon Township	None	
Washtenaw Community College	2 1/4 Mills	1972-1975 Incl.
Washtenaw County Intermediate School District	1 Mill	1972 and future years
Chelsea School District	10.08 Mills	1972-1973 Incl.
Stockbridge Community Schools District	13 Mills	1972 only
Ann Arbor, Michigan	s/ SYLVESTER A. LEONARD	
July 7, 1972	Washtenaw County Treasurer.	

Also Any Additional Amendments or Propositions That May Be Submitted.

Notice Relative to Opening and Closing of Polls

ELECTION LAW, ACT 116, P. A. 1954

SECTION 720. On the day of any election the polls shall be opened at 7 o'clock in the forenoon, and shall be continuously open until 8 o'clock in the afternoon and no longer. Every qualified elector present and in line at the polls at the hour prescribed for the closing thereof shall be allowed to vote.

THE POLLS of said election will be open at 7 o'clock a.m. and will remain open until 8 o'clock p.m. of said day of election.

DORIS FUHRMANN, Township Clerk

Mary Alice Weir Engagement Told

Mr. and Mrs. Garnett Weir, formerly of Chelsea, announce the engagement of their daughter, Mary Alice, to Eugene P. Alber of Ypsilanti, son of Mr. and Mrs. Paul Alber, Clinton. The bride-elect is a 1968 graduate of Chelsea High school and is presently employed by Reid's Hair Fashion, Ann Arbor. Her fiancé is a 1964 graduate of Clinton High school. A Sept. 16 wedding is planned.

LIBERTY BELL FACTS

Despite popular belief, the Liberty Bell did not crack when the Declaration of Independence was read in Philadelphia on July 8, 1776. It cracked 53 years later when it was rung for the funeral of Chief Justice John Marshall.

Flavored yogurt accounts for 80 percent of the yogurt market.

Five Chelsea Young People Attend WMU Orientation Sessions

Nancy E. Aldrich, Ann Marie Barnes, Amy L. Dettling, David L. Buxton, and Laurel A. Prinzing have completed their summer orientation program at Western Michigan University, Kalamazoo.

In groups of about 150 each, the new students spent three days on campus registering for courses, meeting with counselors, and completing preliminary tests. Under the guidance of upperclassmen who are assisting the orientation program, they also made tours of WMU buildings. The final group will arrive Aug. 2.

The freshmen are scheduled to return to the Western Michigan campus on Aug. 29 for final orientation before the start of classes on Aug. 30.

VILLAGE BEAUTY SALON

LORETTA - CINDY - EULA
ARLENE - SARAH - JANICE

107 N. MAIN PHONE 475-5421

Evenings By Appointment

OPEN TUESDAY THRU SATURDAY
Closed Mondays for the Summer Months.

The SUMMER SALE is ON!

BIG REDUCTIONS IN ALL DEPTS.

Hurry, while the selection is still good!

DANCER'S

Chelsea's Friendly Dept. Store

Farewell Party Being Planned for Millard Harveys

A farewell party is being planned for Mr. and Mrs. Millard Harvey of 7825 Mast Rd., at the home of their daughter and son-in-law, Mr. and Mrs. John Stone of 7715 Mast Rd., Sunday, July 30, beginning at 3 p.m. Their family, friends and neighbors are welcome to attend.

Mr. and Mrs. Harvey, the former Marguerite Widmayer, were both born and brought up in the Chelsea area. They were married Oct. 1, 1927, and moved to Dexter in 1929. Mr. Harvey worked for the Dexter Co-operative Co. for many years, American Broach during the war, and the past 20 years as a general contractor for Harvey & Stone until his retirement last year due to his health. He served on the Dexter Village Council, was village president, and justice of the peace. He is a past master and active member of Washenaw Lodge No. 65 F&M, a past patron and active member of the Order of the Eastern Star of Washenaw Chapter No. 302.

Mrs. Harvey will be retiring after working almost 20 years as a bookkeeper at K & E Screw Products of Dexter. She also had been an employee in the Dexter office of the Ann Arbor Bank. Mrs. Harvey has been active in many organizations and has been the secretary of the OES for the past nine years. She is a past matron of that organization.

Mr. and Mrs. Harvey have sold their home and will be moving in August to Moon Lake near Lewiston, where a new home has been built.

Skinner-McGaw Engagement Revealed

Mr. and Mrs. R. H. Skinner of 28 White Horse St., Wymondham, Norfolk, England, announce the engagement of their daughter, Hazel A., to Sgt. Thomas J. McGaw, son of Mr. and Mrs. Thomas J. McGaw of 312 Washington St., Sgt. McGaw, a 1967 graduate of Chelsea High school, is stationed at Lakenheath Air Force Base, Norfolk County, England. The couple plans a Sept. 20 wedding. Sgt. McGaw will be returning to the U. S. in January.

Past Noble Grands

Past Noble Grand Club of Chelsea Rebekah Lodge met Thursday, July 20 at the summer cottage of Mrs. Geno Cottle at North Lake, where members enjoyed a potluck dinner. Mrs. Ida Nixon served as co-hostess.

Mrs. Lulu Sweeney from Florida and Mrs. Alice Gilson from Lewiston also gathered for the meeting. President Loydell Keezer said the prayer and read an article on "Aerosol Cans."

"Happy Birthday" was sung to Mrs. Gilson, whose birthday was the day after the meeting.

Mrs. Dorothy Keezer announced that the Dexter Harmony Lodge had formed a new PNG club, and invited Chelsea's club to their next meeting, Monday, July 31, at 6:30 p.m. in Dexter. Members not present were asked to call her for directions.

The club will not hold a meeting in August. Mrs. Nina Lehmann will host the club on Sept. 14 at her home at 7:30 p.m. Mrs. Clifford Wolfe will be co-hostess.

Mrs. Phyllis Harok was winner of the door prize.

Ham is a happy choice for the outdoor grill. Prepare a whole boneless ham on the rotisserie, slices on the grill or cubes for kabobs. For varied flavor appeal, baste with a favorite sauce.

Calories in beef cuts such as round steak, sirloin tip roast and T-bone steak, and in pork cuts such as loin roast, chops, tenderloin and baked ham, total under 250 calories per 3½-ounce serving of cooked lean meat.



SEW-ON PATCHES
SPECIAL 79¢ (This Week Only)
TAILFEATHER BOUTIQUE
A FUN PLACE TO SHOP
105 N. Main, Chelsea
Phone 475-2512



ALTAR GUILD AT METHODIST HOME: follow Mrs. Bertha Riemenschneider, member of the Home, to enjoy a picnic at the Methodist Home.



WSGS PICNIC: The Women's Society of Christian Service held their July meeting in the form of a picnic luncheon at the Chelsea United Methodist Home. Among those enjoying the lunch were, left to right: Mrs. Clare Warren, Mrs. Neva Prudden, and Mrs. Tom Smith.

Methodist Home Visitors

The Chelsea United Methodist Home has had visits from local church groups lately.

The Rev. Fr. Francis Wahowiak and 22 members of St. Mary Catholic church visited the home Monday, July 17, and invited the Rev. Richard Clemans and six women from the home to join them in a potluck supper. Mrs. Walter Zeeb served as chairman.

The visit was climaxed with a comprehensive tour of the Home. A good view of life at the Home was seen, and many facts were learned about the comforts and the pleasures enjoyed by the members, and the care provided for their needs.

The Women's Society of Christian Service of the Chelsea United Methodist church held their July meeting in the form of a picnic luncheon in the Home recreation area Wednesday, July 19.

Forty members were in attendance, including several members of the Home who were invited to enjoy the occasion.

Following the luncheon, Mrs. V. O. Johnson presented the devotions, and Mrs. Clare Warren, president of the Methodist church WSGS, announced several songs and accompanied the singing with the music of her zither.

SENIOR CITIZENS PICNIC

Thirty-five Senior Citizens gathered for a birthday party picnic at Pierce Park Thursday, July 20. Birthday honorees were August Dorer and Mrs. Minnie Lesser.

John Holzhofer entertained the group with music on the accordion.

HELLER ELECTRIC & INSULATING
Now Edison Approved Electric Heat Dealer

Call us for estimates on all types of wiring.

We insulate old or new homes with Thermatron insulation and install electric heating systems.

CALL 475-7978 or 475-2096



MERKEL'S REGRETFULLY ANNOUNCES THE END-OF-THE-SALE SALE

For the past couple of weeks we've been telling you about how our incredible summer store-wide sale can save you from 10 to 50 percent on nearly all items in stock or catalog.

Alas, summer sales, like summer loves, must eventually end. This year's, an exceptionally torrid affair, will culminate this weekend in a final fling of devil-may-care bargains.

So stop in and save to your heart's content on furniture, carpeting, bedding, and decorative accessories. All regrets aside, when it comes to real values on fine home furnishings, you can't beat a Merkel end-of-the-sale sale.

Merkel

FURNITURE and CARPET

MAIN STREET IN CHELSEA PHONE 475-8621
OPEN MONDAY AND FRIDAY NIGHTS UNTIL 9:00
PROFESSIONAL DESIGN CONSULTING



Mrs. Kevin V. Corazzo

Cecilia E. Ritter, Kevin V. Corazzo Wed Saturday at St. Mary Church

Mary Catholic church was the setting for the marriage of Cecilia Estella Ritter to Kevin V. Corazzo Saturday, July 22. The Rev. Fr. Francis Wahowiak officiated at the noon ceremony before 200 guests.

Mrs. Jane Dettling and Theresa performed "One Hand, One Foot," and "Ave Maria."

The bride is the daughter of Mrs. S. Ritter, Jr., of 509 May St., and the late Mrs. Ritter. The bridegroom is the son of Mr. and Mrs. Victor W. Corazzo of 48 Herman St., Glen Ridge, N. J.

The bride chose a white Victorian-style floor-length gown. She carried a bouquet of daisies and baby's breath.

Mrs. Thomas Beller of Ypsilanti, sister of the bride, attended as a matron of honor. She was attired in a coral floor-length gown with a sweetheart neckline. She carried a bouquet of colored daisies.

Miss Evelyn Estes of Ypsilanti and Miss Kateri Terns of Dearborn, friends of the bride, were bridesmaids. They wore rainbow-colored floor-length floral gowns. Miss Estes' accented in pastel blue.

Griffith-Quigley Vows Spoken at St. Paul Church

St. Paul United Church of Christ was the setting for the marriage of Miss Linda Lee Griffith to Jerry Roger Quigley, Saturday, July 8.

The bride is the daughter of Mr. and Mrs. Fred Haynes of 2630 Wagner Rd., Ann Arbor. The bridegroom is the son of Mr. and Mrs. William Quigley of 1808 Brown Dr.

A reception immediately following the early evening service was held at the Knights of Columbus Hall in Dexter.

Telephone Your Club News To GR 4-3581.

Magic Mirror Beauty Salon

Open Monday thru Friday
9 a.m. to 9 p.m.
Saturday, 8 a.m. to 3 p.m.
PHONE 665-0816

Made for each other



The marriage of diamonds and gold in superb engagement and wedding rings by Keepsake. Brilliant diamonds... reflecting their fiery glow in the gleaming 14K gold bands.

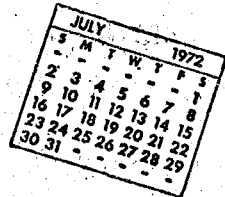
LOVE SONG WED. RING \$175 MAN'S RING \$125 SOUL SONG \$400 TO \$275 WED. RING \$275 BARNET \$850 WED. RING \$475

Keepsake
REGISTERED DIAMOND RINGS

WINANS JEWELRY

Rings enlarged to show detail. Trade-Mark Reg.

Community Calendar



Senior Citizens social party Thursday, Aug. 3 at 7:30 p.m. at the Korner House.

North Lake United Methodist church Country Fair, Saturday, Aug. 5. Games, flea market, bake sale and bazaar items. Lunch starting at 11 a.m. Supper starting at 5 p.m. adv7

Village United Methodist church in Waterloo is hosting an Ice Cream Social Saturday, July 29, beginning at 5 p.m. Whole meal available—sloppy joes, hot dogs, cole slaw, ice cream, cake, and pie. adv6

Chelsea Women's Bowling Club Wednesday, Aug. 2, 7:30 p.m. at Chelsea Lanes.

An ice cream social will be held at the Methodist Home Saturday, Aug. 12, from 4:30 to 7:30. Come for supper, too! Sponsored by the First United Methodist church, Chelsea. adv8

Chelsea Rebekah Lodge No. 130 is on vacation until September. Members are asked to notify Nadine Packard of any sick or in distress members.

Annual meeting and election of officers for Dexter Area Historical Society 11:30 a.m., Saturday, July 29 at the shelter in Hudson Mills Park on North Territorial Rd. off Dexter-Pinckney Rd. Members and families are asked to bring a dish to pass and their own table service. Entertainment will be included in the event.

Pre-camp band meeting Tuesday, August 8, 7:30 p.m. in the high school auditorium.

No August meeting of Limaners.

Chelsea Social Service, second floor of the Municipal Building, is open each Tuesday and Thursday afternoon from 2 p.m. to 5 p.m. to assist persons with problems, either through counseling, or referral to other agencies, when indicated. Limited financial help may be given. The office also maintains a clothing depot for new and used clothing and bedding which is given without charge.

Sophomore class ('75) will meet at Pierce Park Thursday, July 27, and Thursday, Aug. 3 at 2 p.m.

Freshman class ('76) will meet Thursday, July 27, at 3 p.m. at high school football field.

Band booster calendars are in. Contact either 475-2716 or 475-2026.

There will be a meeting of the Tri-City Mixed bowling league Friday, Aug. 4, 7 p.m., at Chelsea Lanes.

Ice cream social at St. Paul's church, Thursday, Aug. 3, at 5 p.m. adv7

Benefit dance for Odis Richardson Friday, July 28, 9 p.m. to 1 a.m. Fair Services Building.

Dexter American Legion Post 557 is giving a Vietnam Veterans steak supper, Saturday, July 29, dinner from 6-8 p.m. Live music by the Lakers to 1 a.m. at the Legion Home on Dexter-Chelsea Rd. and Dexter-Pinckney Rd. in Dexter. Price \$3 per person, refreshments available. Tickets may be secured from any member of the Post or at the Legion Home. xadv6

American Legion and Auxiliary hospital equipment available by contacting Don O'Dell at 475-8249.

Pap tests are free for all area women, Tuesday mornings, at St. Joseph Mercy Hospital, Ann Arbor. Call American Cancer Society office, 668-8857, for appointment.

Inquiries regarding the Chelsea blood bank may be directed to Harold Jones in the event that Mrs. Dudley Holmes is unavailable, or to Mrs. Pauline McKenna, American Red Cross in Ann Arbor, 971-5300.

Ann Arbor Saturday Night Singers Club Dance for single adults 25 years and older at the YM-YWCA, 350 S. 5th Ave., Ann Arbor, every Saturday from 9 p.m. to 12 midnight. Features music, mixers, and refreshments. For information call 663-6068.

Babe Ruth C Team Racks Up 10th Win

(Continued from page one)

Randy Guenther and John Houle pitched a two-hit game. Joel Sprague, Dave Alber, Randy Guenther helped lead the onslaught off the four Dexter pitchers.

After that game, Chelsea C concluded that it had outscored opponents 53 to 17 in the last three games.

Trailer Breaks Away from Truck, Uproots Shrubs

Richard Lowell Scripser, 524 Arthur St., was ticketed for careless driving Monday, July 24, at 3:30 p.m. when the trailer he was pulling broke away from his vehicle and damaged a lawn at 327 W. Middle St.

Scripser was approaching the intersection of W. Middle and Grant Sts. He was driving his Ford pick-up westbound on W. Middle St., pulling a boat trailer. The trailer was loaded with a wooden pole similar to a small telephone pole 20 feet in length.

The trailer broke away from the truck and went over the lawn, causing three shrubs to be uprooted.

Scripser also had defective equipment, an improper attachment on the trailer, and failed to have safety chains present on the vehicle.

Witnesses reported that three small children nearby were nearly struck by the trailer.

Tickets Still Available For Odis Richardson Benefit Dance Friday

You may still buy tickets at the door for the benefit dance for Odis Richardson Friday, July 28. The dance will be held at the Fair Services Building from 9 p.m. to 1 a.m.

"The Researchers," Jim Gaken's band, will be playing. Ticket price includes food, drinks, and entertainment.

"There's still plenty of time to come on over after the high school play," says Gaken.

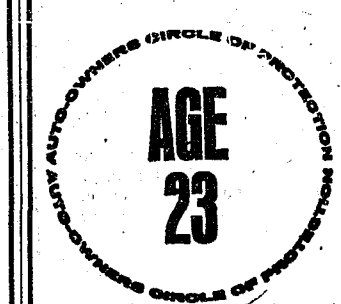
DEATHS

A daughter, Sandra Lynn, July 23 at St. Joseph Mercy Hospital, Ann Arbor, to Mr. and Mrs. Larry Walz, 14 Cavanaugh Lake Rd. Maternal grandparents are Mr. and Mrs. Donald Rudolph of Indiana. Paternal grandparents are Mr. and Mrs. John Walz of California, formerly of Chelsea.

A daughter, Cory Jean, July 23 at St. Joseph Mercy Hospital, Ann Arbor, to Dr. and Mrs. Arthur Tremper, 246 1/2 Jefferson St. Maternal grandparents are Mr. and Mrs. R. R. Spaulding of Chelsea and paternal grandparents are Mr. and Mrs. Horace Tremper of New Jersey. Great-grandmothers are Mrs. Harold Spaulding and Mrs. Vincent Burg, both of Chelsea.

A son, Ronald Thomas Johnson, has been adopted by Mr. and Mrs. Thomas Johnson of 344 Rosedale, Ann Arbor. Mrs. Johnson is the former Jane Griffith. Maternal grandparents are Mr. and Mrs. W. W. Griffith and paternal grandparents are Mr. and Mrs. Alfred Johnson, all of Chelsea.

Telephone Your Club News To GR 5-3581.



Married Male Driver

Your A-O man will save you money on your car insurance. No surcharge or higher rate. See your A-O man—he's all out for you.

A. D. MAYER AGENCY, INC.

"Your Protection Is Our Business" Phone 479-5061

115 Park St. Chelsea

Auto-Owners INSURANCE COMPANY Home Office at Lansing, Michigan



MURPHY'S BARBER SHOP Little League Team: This league-leading team sports a 5-0 record. Front row, left to right: Todd Koch, Billy Klobuchar, Jeff Stirling, Chris Umstead, Stuart Blacklaw, and Randy Harris. Back row, left to right: John Scott, Jim Stirling, Rod Sweeney, Mike Rybka, Jim Fitzsimmons, and Mike Machesky. Catcher Steve Dresch is kneeling, and coach Harold Dresch stands behind the team. Missing from the picture are Mike Wood, Brian Hosler, and Jeff Powell.

Tell People You Read It in The Standard!

Kiwanians Admit Key Club Supremacy

Although the teams did not keep high school field score, the Kiwanis Club has grudgingly admitted that the Key Club "We were pretty evenly matched, but I guess that they did sort of ball game Monday, July 24 at the have a lead over us."

GAMBLES

SUMMERTIME BRINGS OLD FRIENDS TOGETHER

SUN Granular Chlorine Concentrate
\$5.50 2-18. BOX

SUN Algaecide Concentrate
\$4.95 QT.

SWIMMING POOL CHEMICALS THAT REALLY DO THE JOB

Shop Us for All Your Pool Needs!

BUDGET-WISE STORE

116 SOUTH MAIN STREET PHONE 475-7501

AUGUST STOCK REDUCTION SALE

Due to changing our operation we will be closing out certain lines of merchandise. Therefore, we are holding an August Stock Reduction Sale.

RIDICULOUS PRICES

<p>ONE GROUP OF</p> <p>WATCHES \$8.49</p> <p><i>While They Last!</i></p>	<p>RETRACTABLE MODEL</p> <p>SCHICK SHAVERS . . \$9.95</p>
---	--

CAMERAS - RADIOS - COFFEE POTS - HAIR SETTERS

VITAMINS - TOILET GOODS - COSMETICS

ALL OVER-THE-COUNTER DRUG MERCHANDISE

AT COST OR BELOW!

SHOP NOW AND SAVE!

<p>27" BROWN</p> <p>SHOE LACES . . 50 pr. \$1.00</p> <p>REG. 39c WRAPPING</p> <p>TISSUE PAPER . . 2 for 39c</p> <p>Pocket DICTIONARY . . . 19c</p> <p>Webster DICTIONARY . . 59c</p> <p>REG. \$1.29</p> <p>MOSQUITO COILS, 2 for \$1.29</p> <p>ALL SIZES - REG. 69c</p> <p>TRASH CAN LINERS, 2 for \$1</p>	<p>REG. \$6.95</p> <p>STORAGE WARDROBE, \$4.99</p> <p>REG. 3 FOR \$1.79 ASSTD.</p> <p>PLASTIC ASHTRAYS, 3 for \$1</p> <p>DISPOSABLE CHARCOAL</p> <p>GRILL with Charcoal . . . 29c</p> <p>YOUR CHOICE</p> <p>ASSORTED TOOLS . . . 50c</p> <p>16-OZ.</p> <p>Windshield Washer Solvent, 10c</p>
--	---

Budget-Wise Store To Change Operations

Budget Wise Store, Chelsea's first discount store, is planning to change its operations somewhat to better serve the customers of Chelsea and the surrounding areas. We have decided to feature Hallmark cards and gifts in our store. We are therefore holding a gigantic August Clearance sale on our present line of drug and sundry merchandise. Effective July 27, we will be closing out many lines of merchandise in our store at cost and below. Come in and take advantage of these once-in-a-lifetime bargain prices.

We wish at this time to thank all of our customers and friends who have patronized us through the years, and hope that they will continue to do so through our new services as a card and gift shop. We plan to handle a complete line of seasonal and everyday greeting cards, gift wrap, candles, gifts, etc. We do still plan to handle cameras, film, batteries and related items, as well as our photo processing service.

Do-It-Yourself

12" x 12"

CARPET SQUARES

Self-Adhesive Type

Carpet A Room In Your Home In One Evening!

★ **SHAGARIFIC**

—LONG WEARING
100% CONTINUOUS FILAMENT NYLON
—BUILT-IN WAFFLE PADDING

57c ea. REG. 65c

★ **INDOOR-OUTDOOR**

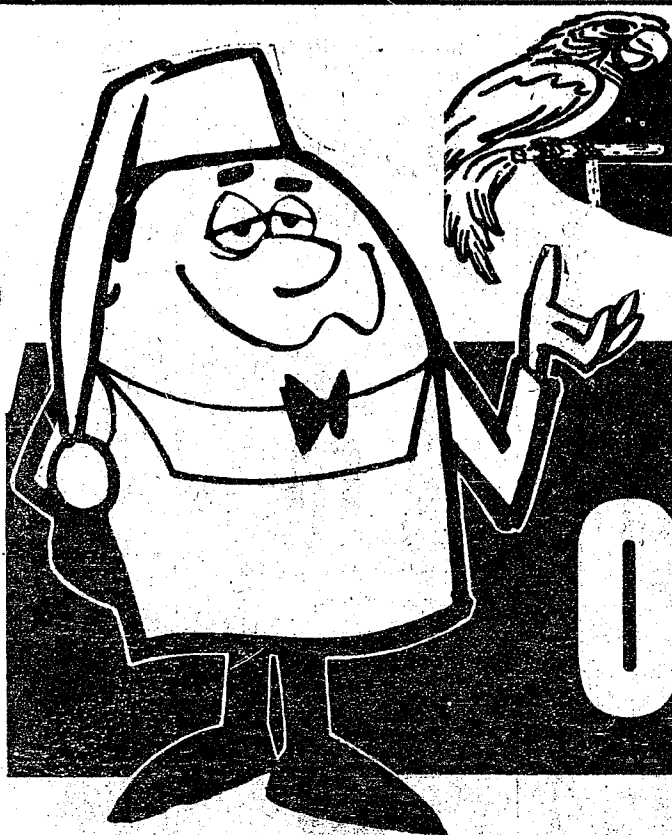
—100% MONSANTO ACRYLIC FIBER
—5 COLORS IN STOCK

39c ea. REG. 44c

Sale Prices Good Through Sat., Aug. 5

At Your Home Supply Center

CHELSEA LUMBER CO.



Polly's
MASTER MARKETS

here when you need us!

OPEN 24 HOURS 7 DAYS A WEEK

1101 M-52

CHELSEA

GOV'T INSPECTED FRESH DRESSED WHOLE

FRYERS
CUT UP Lb. 35c
Whole Legs or Breasts Lb. 59c
29^c Lb. Limit 4 Please

FARMER PEET'S FARMHOUSE

SLICED BACON Lb. **69^c**

Farmer Peet's Regular Smoked

HAM
FULL SHANK HALF Lb. **59^c**
FULL BUTT HALF Lb. **69^c**
WHOLE Lb. **65^c**

FRESH TURKEY
DRUMSTICKS Lb. **33^c**
HYGRADE ALL MEAT BALL PARK **FRANKS** Lb. **89^c**
HYGRADE PURE PORK **SAUSAGE** 1-lb. roll **69^c**
ECKRICH REG. OR THICK SLICED **BOLOGNA** Lb. **\$1⁰⁹**
ECKRICH **SMOKY LINKS** 10-Oz. Pkg. **89^c**
ECKRICH SWEET SMOKED **SLICED BACON** Lb. **99^c**
BOOTH FRESH FROZEN **SOLE FILLETS** Lb. **\$1⁰⁹**
BOOTH FRESH FROZEN **COD FILLETS** Lb. **\$1⁰⁹**

FRESH SLICED **BEEF LIVER** Lb. **69^c**
USDA CHOICE BEEF CENTER CUT **CHUCK STEAK** Lb. **89^c**
LEAN GROUND BEEF **SIZZLERS** Lb. **\$1¹⁹**
BONELESS WASTE FREE **PORK CUTLETS** Lb. **89^c**
LEAN FRESH PICNIC **PORK ROAST** Lb. **59^c**
FRESH MEATY **PORK HOCKS** Lb. **39^c**
FARMER PEET'S SLICED **BOLOGNA** Lb. **79^c**
FARMER PEET'S **LINK SAUSAGE** Lb. **99^c**
FARMER PEET'S BULK ROASTED OR **POLISH SAUSAGE** Lb. **89^c**
ARMOUR SWANEE **BACON ENDS** 3-Lb. Box **89^c**
ECKRICH ALL MEAT **FUN FRANKS** Lb. **89^c**
MAHOGANY FARMS SANDWICH OR **STRIP STEAKS** 12-Oz. Pkg. **\$1⁷⁹**
BOOTH FRESH FROZEN **PERCH FILLETS** Lb. **85^c**
BOOTH FRESH FROZEN **TURBOT FILLETS** Lb. **93^c**

U. S. NO. 1 MICHIGAN

POTATOES 10 Lb. Bag **69^c**
COOL CRISP PASCAL **CELERY** Stalk **28^c**
MEATY GREEN **PEPPERS** Ea. **10^c**
GREEN **CUCUMBERS** Ea. **10^c**
CRISP RED **RADISHES** 6-Oz. Pkg. **10^c**
SOLID **CABBAGE** Lb. **10^c**
SWEET **NECTARINES** Lb. **39^c**
CALIFORNIA **RED PLUMS** Lb. **39^c**

GIANT

DOWNY
SPIC N SPAN
BATH SIZE
SAFEGUARD
BATH SIZE
ZEST
KING SIZE
DOWNY

SAVE 20c WITH COUPON

33-Oz. **49^c**
SAVE 16c WITH COUPON
54-Oz. **79^c**
SAVE 12c WITH COUPON
2 Bars **24^c**
SAVE 15c WITH COUPON
3 Bars **39^c**
SAVE 24c WITH COUPON
64-Oz. **\$1.09**

2c OFF LABEL

COMET Can **16^c**

10c OFF LABEL

TIDE 49-Oz. **71^c**

SAVE \$1.16

COCA-COLA
CASE OF 24 - 16-OZ. BOTTLES **\$1⁹⁹**
Plus Deposit

BORDEN'S ICE CREAM

BARS 12 Pak **68^c**
SEALTEST COTTAGE **CHEESE** 16-Oz. **29^c**

NABISCO COMET CUPS OR

CONES 12-Ct. **\$1**
VERNOR'S FLAVORED **COLAS** 6 Pak **69^c**

SEALTEST

2% VITALURE 1/2-Gal. **89^c**

BORDEN'S

ICE CREAM Gallon **69^c** SAVE 24c

TRUCKLOAD SALE KIMBERLY CLARK PRODUCTS

KLEENEX TOWELS Jumbo Roll **29^c**
KLEENEX BOUTIQUE TOILET TISSUE 2 Roll Pak **29^c**
LITTLE TRAVELERS FACIAL TISSUE 70 Ct. **10^c**
KOTEX REGULAR 40 Ct. **\$1²³**
REGULAR OR SUPER KOTEX TAMPONS 40 Count **\$1⁰⁹**

TERI TOWELS 3 Jumbo Rolls **99^c**
KLEENEX DINNER NAPKINS 50 Ct. **25^c**
KLEENEX FACIAL TISSUES 3 280 Count Boxes **99^c**
KOTEX SUPER 40 Ct. **\$1²³**
DELSEY TOILET BOWL CLEANER 12-Oz. **75^c**

CLIP & SAVE

SAVE 20c WITH COUPON

DOWNY

33-Oz. **49^c**

With \$3.00 Purchase

LIMIT 1

EXP. JULY 29, 1972

SAVE 16c WITH COUPON

SPIC N SPAN

54-Oz. **79^c**

With \$3.00 Purchase

LIMIT 1

EXP. JULY 29, 1972

SAVE 12c WITH COUPON

SAFEGUARD

2 Bath Bars **24^c**

With \$3.00 Purchase

LIMIT 2

EXPIRES JULY 29, 1972

SAVE 15c WITH COUPON

BATH SIZE ZEST

With \$3.00 Purchase

3 Bars **39^c**

Lesser Amounts Reg. Price

LIMIT 3

EXPIRES JULY 29, 1972

SAVE 24c WITH COUPON

KING SIZE DOWNY

64-Oz. **\$1⁰⁹**

With \$3.00 Purchase

EXPIRES JULY 29, 1972



CENTRAL FIBRE PRODUCTS T-Ball Team: Front row, left to right: Billy Lamb, Duane Robbins, Mike O'Quinn, Mark Machesky, Jeff Cox, Tracy Borowski, Mike Galbraith, and Ralph Machesky. Back row, left to right: Craig Thams, Chan Lane, Ross Stofflet, Mike Bareis, Tim Greenleaf, Andy Bonus, David Weber, and Troy Hosler. Missing are Ray Williams and Tim Dmoch. Bruce Galbraith coaches the league-leading team.



CHELSEA STATE BANK T-Ball Team: Front row, left to right, Scott Cooper, John Haydock, Paul Haydock, Darron Pierson, Jeb Schiller, Matt Villemure, and Drew Sprague. Back row, left to right, Brian Cooper, Will Rosentreter, Todd Sprague, Shawn Pierson, Eric Gaken, Mike Wade, and Rick Eder. Missing from the picture are Mike Ward, Kevin Tobin, and Dan Peterson. Coaches are Jim Sprague and Pat Wade.

Central Fibre Retains Lead in T-Ball Action

Central Fibre Products retained their first place standing by defeating Dana Corp. 13-5 Wednesday, July 19, in T-Ball action.

Central Fibre cashed in on the hits of Andy Bonus, Ross Stofflet, Craig Thams, and Ralph Machesky, who all had two hits.

Connecting for Dana Corp. were Jim Stock, Mark Steinaway, Bill Merkel, Phil Hoffman, and Randy Luick.

Dana Corp. walloped Chelsea JC's by a score of 39-8 Monday, July 24, in T-Ball play.

Big batsmen for Dana Corp. were David Alber and Joel Kirshbaum, who each had four home runs. Other connecting batters were Jim Stock, Phil Hoffman, Mark Smith, Greg Ackley, and Brian Targher.

Hitting for Chelsea JC's were Mark Beyer, Robert Ball, and Jamie Owings.

Chelsea State Bank defeated Central Fibre Products 9-8 Monday, July 24, in T-Ball action.

Connecting for the winners were: Darron Pierson, Mike Wade, Troy Schiller, Eric Gaken, Shawn Pierson, Scott Cooper, and Paul Heydock.

Hitting for Central Fibre were Mike Bareis, Chan Lane, and Ross Stofflet, two each, David Weber and Craig Thams, home runs, and Troy Hosler, a grand slam home run.

Chelsea State Bank defeated Chelsea JC's 20-12 Wednesday, July 19, in T-Ball play.

Connecting for the winning team were: Drew Sprague, Mike Ward, John Heydock, and Mike Wade, three hits; and Rick Eder, Darin Pierson, and Shawn Pierson, two hits.

Hitting for the JC's were Galye Beyer, John Riemenschneider, Tim

Pennington, Mark McMullen, Richard Weeks, Leon Durgan, Dave Wojcicki, Terry Lucas, and Mark Beyer.

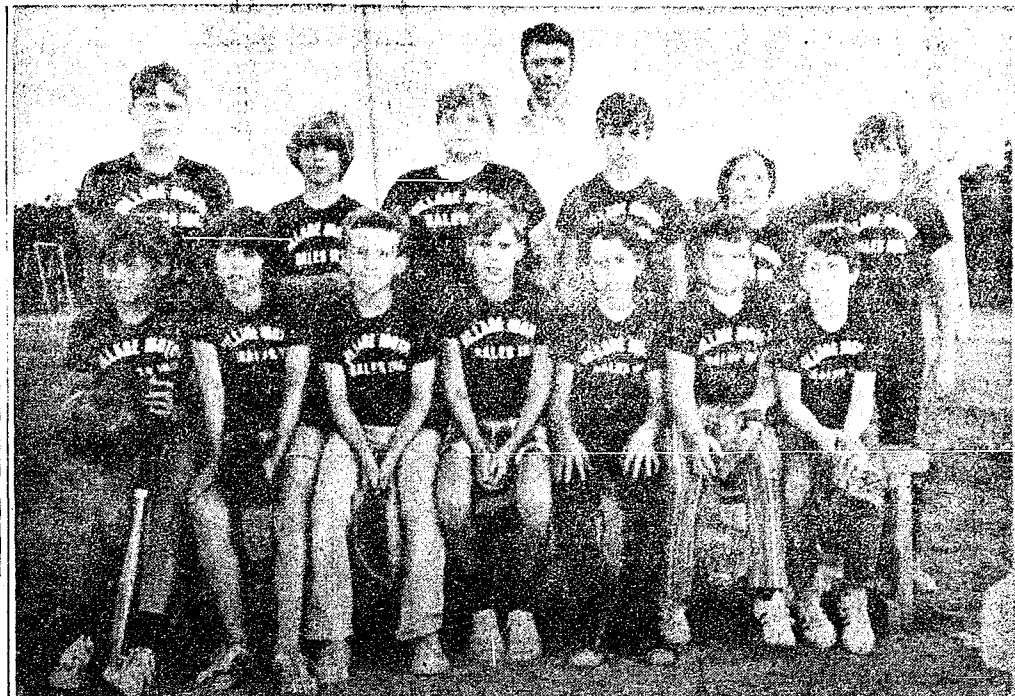
Tee Ball League Standings

Standings as of July 25

	W	L
Central Fibre Prod.	5	2
Dana Corp.	4	3
Chelsea State Bank	4	3
Chelsea JC's	1	6

Results—
Chelsea State Bank 20, Chelsea JC's 12.

Central Fibre Products 13, Dana Corp. 5.
Dana Corp. 39, Chelsea JC's 8.
Chelsea State Bank 9, Central Fibre Products 8.



VILLAGE MOTOR SALES Little League Team: Front row, left to right: John Dunn, Jim Stock, Sam Picklesimer, Brian Herriker, Ray Sabo, David Morris, and Dan McGill. Back row, left to right: Kurt Owings, Dave Stock, James Bollinger, Tom Stock, coach, Jeff Eder, Joe Ewald, and Dave Burg. Not pictured are Ron Castleberry, Scott Dalton, Al Dalton, Dirk Borton, Brad Knickerbocker, Jim Leach, Scott Otto, and Todd Otto.

Murphy's Still Leads Little League

Murphy's Barber Shop eased by Heydlauff's 7-0 Thursday, July 20, in Little League play, behind the fine pitching of Rod Sweeney and Jeff Powell.

Connecting batsmen for Murphy's were Mike Machesky, Jeff Powell, Rod Sweeney, and Mike Wood.

Getting hits for Heydlauff's were John Daniels and Dean Thompson.

W. C. Weber Construction Co. defeated North American Rockwell 9-3 Thursday, July 20 for their first win of the Little League season.

Connecting for the winning team were: Steve Check and Pat Murphy.

Hitting for North American Rockwell were: Brian Burg, Phil Steinhauer, and John Adams.

Little League Standings

Standings as of July 25

	W	L
Murphy's Barber Shop	5	0
Heydlauff's	4	2
Village Motor Sales	2	2
W. C. Weber Const. Co.	1	4
No. American Rockwell	1	5

Results—
Murphy's Barber Shop 7, Heydlauff's 0.
W. C. Weber Construction Co. 9, North American Rockwell 3.

Michigan has nearly 1,500 miles of toll-free limited access freeways, offering visitors greater driving ease. For visitor safety, there are 63 rest areas along the freeways.

Babe Ruth A Team Moves Up

Chelsea A Babe Ruth team moved into a tie for second place by defeating Chelsea B, 5-1, Friday, July 21.

Chelsea A was led by the hitting of Don Nadeau and Mike Nadeau, singles; Paul Wood and Mike Check, doubles; and Perry Johnson, with a triple.

Perry Johnson and Bill Clark combined pitching talents for a one-hitter, a single by Dale Schoenberg.

Babe Ruth League

Standings as of July 24

	W	L
Chelsea C	9	1
Chelsea B	8	4
Chelsea A	8	4
Manchester A	5	6
Manchester B	4	6
Dexter A	3	7
Dexter B	0	10

Babe Ruth Schedule

Week of July 27-Aug. 3

Thursday, July 27—Dexter A vs. Chelsea C.

Subscribe Today to The Standard!

ANNUAL SUMMER SALE

Beginning Friday, July 21

20% to 50% REDUCTIONS

on Men's Fine Merchandise from Our Regular Stock

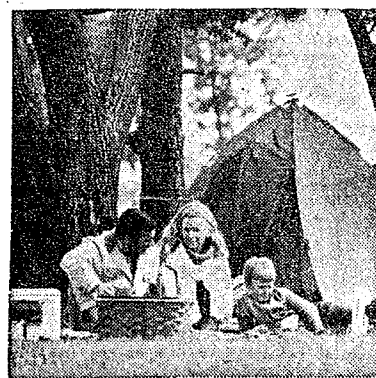
included are:

- Lightweight Suits
- Tropical Sportcoats
- Shirts
- Bermuda Shorts
- Swim Trunks

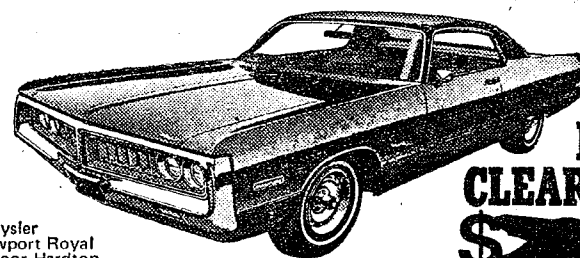
STRIETER'S MEN'S WEAR

"The Place To Go for Brands You Know"

Let our final clearance prices put more *joy* into your Summer of '72



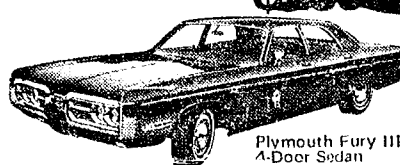
CHRYSLER NEWPORT ROYAL



FINAL CLEARANCE
\$2000

Chrysler Newport Royal 2-Door Hardtop

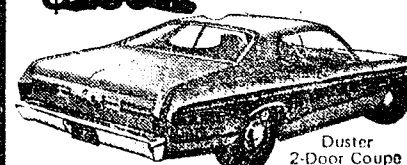
PLYMOUTH FURY FINAL CLEARANCE



Plymouth Fury III 4-Door Sedan

Joy is knowing you did the right thing in The Summer of '72

PLYMOUTH DUSTER FINAL CLEARANCE



Duster 2-Door Coupe

AUTHORIZED DEALERS CHRYSLER MOTORS CORPORATION

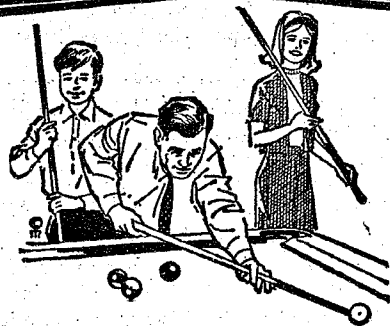
Final clearance *joy* to you from...

PAK/CIDAA

VILLAGE MOTOR SALES, INC.

1185 MANCHESTER ROAD

CHELSEA, MICHIGAN



New Fun Game, Easy To Play ... All Can Learn!

Try billiards for an evening's fun. It's new ... exciting ... easy to learn ... the whole family can play together ... great fun, and so inexpensive!

CHELSEA LANES
1180 M-52 Phone GR 5-8141

Fast Pitch 1972 Schedule

All Games at CHS Field

AMERICAN LEAGUE

Date	Time	Game
Aug. 1	6:30 p.m.	Sweepsters vs. Wolv. Bar
Aug. 7	8:15 p.m.	1st A. L. vs. 2nd N. L.
Aug. 9	8:15 p.m.	ALL STAR

NATIONAL LEAGUE

Date	Time	Game
July 31	6:30 p.m.	St. Paul's vs. Cav. Lk. Store
Aug. 2	8:15 p.m.	IPSCO vs. Jiffy Market
Aug. 8	8:15 p.m.	City Champs

Teams listed first will be the home teams. The home team will be given one of the game balls if there are two balls left that the game started with. Rainouts will be a one-hour wait on first game and play the second game with the curfews moved back.

Slow Pitch 1972 Schedule

All Games at CHS Field

Date	Time	Game
July 27	6:30 p.m.	Proving Grnds. vs. Teachers
Aug. 3	8:15 p.m.	Meth. ch. vs. Prov. Grnds.
Aug. 4	8:15 p.m.	Teachers vs. Methodist ch.
Aug. 10	8:15 p.m.	N. A. Rock vs. Meth. ch.

Teams listed first will be the home teams. The home team will be given one of the game balls if there are two balls left that the game started with. Rainouts will be a one-hour wait on first game and play the second game with the curfews moved back.

Red Flannel Capital

Michigan has Detroit, the motor capital ... Battle Creek, the cereal capital ... and it has Cedar Springs, the red flannel capital. Yes, John Q. Public, red flannel wear is a principal product of Cedar Springs, and its citizens celebrate that fact each year in October on Red Flannel Day.

YES

WE ARE MAKING LONG-TERM FARM REAL ESTATE LOANS

SEE US



P. O. Box 1006
Ph. 769-2411 3645 Jackson Rd.
Ann Arbor, Mich. 48103

Elect Jerold

LAX

Circuit Judge



County 4-H Show Opens Next Tuesday

The Rural Activities Center on the Ann Arbor Rd. will be the site of the annual 4-H Youth Show, Aug. 1-4. The show will feature many displays and exhibits from the various groups in the county.

The Teen Leader Club will manage both promoting the various 4-H projects and will pass pamphlets explaining the activities of the organization.

The show will be open about 10 a.m. on Tuesday, and will run until Friday. Approximately 1,200

students are expected to participate in the show.

Purposes of the show are 1) to provide stimulating educational experiences different from those usually provided in local club programs, 2) to provide a dynamic and comprehensive public view of 4-H Youth Programs in action, 3) to provide recognition, inspiration, and fellowship to encourage greater future achievement and leadership, 4) to provide exposure to and exploration of new ideas for future efforts, 5) to help individuals

broaden their relationship with others, and 6) to inspire and serve as a laboratory for leadership development for youth and adults.

4-Hers will participate in the following categories: livestock, plant science and horticulture, home economics, arts, crafts and hobbies, environmental quality, action learning laboratories, and miscellaneous projects and educational exhibits.

Winners will receive ribbons and premium money as prizes for their efforts.

Recreation Program Schedule

Monday, Wednesday, Friday—
9 a.m.-12 noon—Baton, North school.

GENERAL PRIMARY ELECTION

To The Qualified Electors:

NOTICE IS HEREBY GIVEN,
That a General Primary Election will be held in the
TOWNSHIP OF DEXTER

(Precinct No. 1)
STATE OF MICHIGAN

AT

New Dexter Township Hall

On Dexter-Pinckney Road Near North Territorial Road

Within said Township on

TUESDAY, AUGUST 8, 1972

For the purpose of placing in nomination by all political parties participating therein, candidates for the following offices, viz:

CONGRESSIONAL U. S. Senator,
Representative in Congress

LEGISLATIVE Representative

COUNTY Prosecuting Attorney, Sheriff, County Clerk, County Treasurer, Register of Deeds, Drain Commissioner, Coroners, Surveyor, County Commissioner and such other Officers as are elected at that time.

TOWNSHIP Supervisor, Clerk, Treasurer,
1 Trustee.

AND FOR THE PURPOSE OF PLACING IN NOMINATION, CANDIDATES PARTICIPATING IN A NON-PARTISAN PRIMARY ELECTION FOR THE FOLLOWING OFFICES, VIZ:

JUDGE OF THE COURT OF APPEALS
CIRCUIT COURT JUDGE
PROBATE COURT JUDGE
DISTRICT COURT JUDGE

AND ALSO TO VOTE ON THE FOLLOWING:

Proposed constitutional amendment to allow trial by a jury of less than twelve jurors in all prosecutions in all courts for misdemeanors punishable by imprisonment for not more than one year.

AND ALSO TO VOTE ON THE FOLLOWING PROPOSITION:

Proposal to raise millage from 1/4 mill to 1/2 mill for Huron-Clinton Metropolitan Authority.

COUNTY TREASURER'S STATEMENT

(As required by Act 293, Public Acts of Michigan 1947.)

I, Sylvester A. Leonard, County Treasurer of the County of Washtenaw, State of Michigan, do hereby certify that, according to the records of this office, as of July 7, 1972, the total of all voter increases in the tax rate limitation, above the 18 mills established taxable property in Dexter Township, Washtenaw County, State of Michigan in said Township is as follows:

LOCAL UNIT	VOTED INCREASE	INCREASE EFFECTIVE	YEARS
Dexter Township	None	1972-1975 Incl.	
Washtenaw Community College	2 1/4 Mills	1972 & future years	
Washtenaw County Intermediate School District	1 Mill	1972 & future years	
Livingston Intermediate School District	1/4 Mill	1972 & future years	
Chelsea School District	10.08 Mills	1972-1973 Incl.	
Dexter Community School District	12.00 Mills	1972 only	
Pinckney Community School District	4 1/2 Mills	1972-1973 Incl.	

Ann Arbor, Michigan
July 7, 1972
s/ SYLVESTER A. LEONARD
Washtenaw County Treasurer.

Also Any Additional Amendments or Propositions That May Be Submitted.

Notice Relative to Opening and Closing of Polls

ELECTION LAW, ACT 116, P. A. 1954

SECTION 720. On the day of any election the polls shall be opened at 7 o'clock in the forenoon, and shall be continuously open until 8 o'clock in the afternoon and no longer. Every qualified elector present and in line at the polls at the hour prescribed for the closing thereof shall be allowed to vote.

THE POLLS of said election will be open at 7 o'clock a.m. and will remain open until 8 o'clock p.m. of said day of election.

WILLIAM EISENBEISER, Township Clerk

Beef Operation on July 27 State Farm Tour

A beef cattle operation, which features an enclosed slatted floor finishing unit with a 400-head capacity, will be one of 10 Lenawee county farms open to rural visitors during the 24th State Farm Management Tour Thursday, July 27.

Operated as an equal partnership between Jack Raymond and his stepson, Dave Stutzman, the

The price bid will be per pound of live weight, and will be slightly higher than the day's market price. The higher price is paid as an incentive to the 4-H youth to raise quality animals.

After the sale is over, buyers may pay for the animal or arrange for billing. The buyers may also make arrangements to have the animal processed at one of the local plants. The processing cost will be in addition to the live price paid.

Sometime the next week, the processor will call and ask how the buyers want the meat cut and packaged. He will also inform them of the approximate pick-up date.

indoor-outdoor beef operation annually feeds out 900 head.

The two man team purchases 500-600 pound yearlings in Kentucky, and starts them in an outside lot. The animals are then finished in the 68 ft. by 120 ft. barn, which allows about 20 feet per animal when filled to capacity.

The ration is corn silage to which anhydrous ammonia is added at harvest. In addition, a home-made supplement (48 percent protein) is fed. This contains urea, soybean oil meal, salt, vitamins A, D and E., antibiotics and dl-calcium phosphate. The cattle also are implanted with two 15 milligrams of stilbestrol.

Ninety percent of the acreage on this 700-acre farm near Seneca is planted to corn. The remaining tillable land is in hay.

The farm has a trench silo with a 4,000-ton capacity and two upright silos—both 24 ft. by 60 ft. Other tour stops include a second beef finishing operation, two dairy, swine, and cash crop farms, one poultry farm and a fruit orchard. Free buses will shuttle visitors to the host farms from the fairgrounds in Adrian. Morning departure is 9 a.m. with return to the fairgrounds at 11:45. Afternoon buses will leave at 1:45 and return at 4 p.m.

William Erwin, deputy under-

THANK YOU

I wish to thank all those who sent flowers, gifts and cards while in the hospital and since my return home. And Rev. Dickens for his visit to the hospital and all others who came to see me. Thanks to my family for taking over when I came home. It was all very much appreciated.

Mrs. Roy Kalmback.

CARD OF THANKS

Our sincere thanks to all our friends for their many kindnesses and support during the illness and death of Henry Patrick, husband and father. The thoughtfulness is deeply appreciated.

Mrs. Sudie Patrick,
Chalmer, Janice Flint
and Steve,
Jim, Peggy Deaten
and Shiela.

DISCOVER DEXTER

DAYS

August 4-5

★

Old Time Movies!

Pie Baking Contest!

Square Dance Fri., Aug. 4.

secretary for rural development in the U. S. Department of Agriculture, will be the luncheon speaker.

The State Farm Management Tour is an annual event in which top Michigan farms are open to the rural public. It is sponsored this year by a group of Lenawee county farmers and agri-businessmen and the Michigan State University Cooperative Extension Service.

Know the Label When Buying Hamburger

When you buy hamburger for your family at the store, are you confused about the many different labels? Don't feel badly. A lot of other people are confused, too.

What is hamburger? Michigan's strict law on comminuted meats provides the answer, and the law is enforced by the Consumer Protection bureau of the Michigan Department of Agriculture.

B. Dale Ball, department director, says:

"The law provides that hamburger cannot contain more than 30 percent fat. Anything labelled 'ground beef' can't contain more than 20 percent fat. That's the difference."

"Both hamburger and ground beef must be made from skeletal meat only in Michigan. No livers, lungs or hearts are permitted. And the only additive allowed is monosodium glutamate, if declared."

Packages labelled "hamburger from ground chuck" or "hamburger from ground round" may indicate you are buying a better-textured meat, but it's still hamburger and can contain up to 30 percent fat. The key word is "hamburger."

It is illegal to sell any products which exceed the limitations on fat content, and MDA's laboratory tests samples periodically to be sure the standards are met. Violators may be prosecuted.

Signs boasting "all-beef hamburger" aren't illegal, but the product is the same as all other hamburger in Michigan.

So the next time you shop for hamburger, remember to check the label. If it says "hamburger" anywhere on the package, it may contain up to 30 percent fat, regardless of what other fancy names may be added.

Vastly better ways of treating and preventing malignant tumors and leukemia are expected to result from Veterans Administration research on how and why cells become cancerous.

(Political Advertising)



CARL F. KOCH
for
SHERIFF
★ EXPERIENCED
★ INTEGRITY

VOTE PRIMARY - TUESDAY, AUG. 8

GENERAL PRIMARY ELECTION

To The Qualified Electors:

NOTICE IS HEREBY GIVEN,

That a General Primary Election will be held in the

TOWNSHIP OF LIMA

(Precinct No. 1)

STATE OF MICHIGAN

At

Lima Community Hall

Within said Township on

TUESDAY, AUGUST 8, 1972

For the purpose of placing in nomination by all political parties participating therein, candidates for the following offices, viz:

CONGRESSIONAL U. S. Senator,
Representative in Congress

LEGISLATIVE Representative

COUNTY Prosecuting Attorney, Sheriff, County Clerk, County Treasurer, Register of Deeds, Drain Commissioner, Coroners, Surveyor, County Commissioner and such other Officers as are elected at that time.

TOWNSHIP Supervisor, Clerk, Treasurer,
1 Trustee, 1 Constable

AND FOR THE PURPOSE OF PLACING IN NOMINATION, CANDIDATES PARTICIPATING IN A NON-PARTISAN PRIMARY ELECTION FOR THE FOLLOWING OFFICES, VIZ:

JUDGE OF THE COURT OF APPEALS
CIRCUIT COURT JUDGE
PROBATE COURT JUDGE
DISTRICT COURT JUDGE

AND ALSO TO VOTE ON THE FOLLOWING:

Proposed constitutional amendment to allow trial by a jury of less than twelve jurors in all prosecutions in all courts for misdemeanors punishable by imprisonment for not more than one year.

AND ALSO TO VOTE ON THE FOLLOWING PROPOSITION:

Proposal to raise millage from 1/4 mill to 1/2 mill for Huron-Clinton Metropolitan Authority.

COUNTY TREASURER'S STATEMENT

(As required by Act 293, Public Acts of Michigan 1947.)

I, Sylvester A. Leonard, County Treasurer of the County of Washtenaw, State of Michigan, do hereby certify that, according to the records of this office, as of July 7, 1972, the total of all voter increases in the tax rate limitation, above the 18 mills established taxable property in Lima Township, Washtenaw County, State of Michigan in said Township is as follows:

LOCAL UNIT	VOTED INCREASE	INCREASE EFFECTIVE	YEARS
County of Washtenaw	None	1972-1975 Incl.	
Lima Township	None	1972-1975 Incl.	
Washtenaw Community College	2 1/4 Mills	1972 & future years	
Washtenaw County Intermediate School District	1 Mill	1972 & future years	
School Dist.	10.08 Mills	1972-1973 Incl.	
Chelsea School District	12.00 Mills	1972 only	
Dexter Community School District	4 1/2 Mills	1972-1973 Incl.	

Ann Arbor, Michigan
July 7, 1972
s/ SYLVESTER A. LEONARD
Washtenaw County Treasurer.

Also Any Additional Amendments or Propositions That May Be Submitted.

Notice Relative to Opening and Closing of Polls

ELECTION LAW, ACT 116, P. A. 1954

SECTION 720. On the day of any election the polls shall be opened at 7 o'clock in the forenoon, and shall be continuously open until 8 o'clock in the afternoon and no longer. Every qualified elector present and in line at the polls at the hour prescribed for the closing thereof shall be allowed to vote.

THE POLLS of said election will be open at 7 o'clock a.m. and will remain open until 8 o'clock p.m. of said day of election.

LEILA BAUER, Township Clerk

JULY SPECIAL

KELVINATOR

ELECTRIC RANGE

REFRIGERATOR

DISHWASHER

All 3 Pieces

Only \$579⁰⁰

until July 31 Only

Modernize Your Kitchen Now!

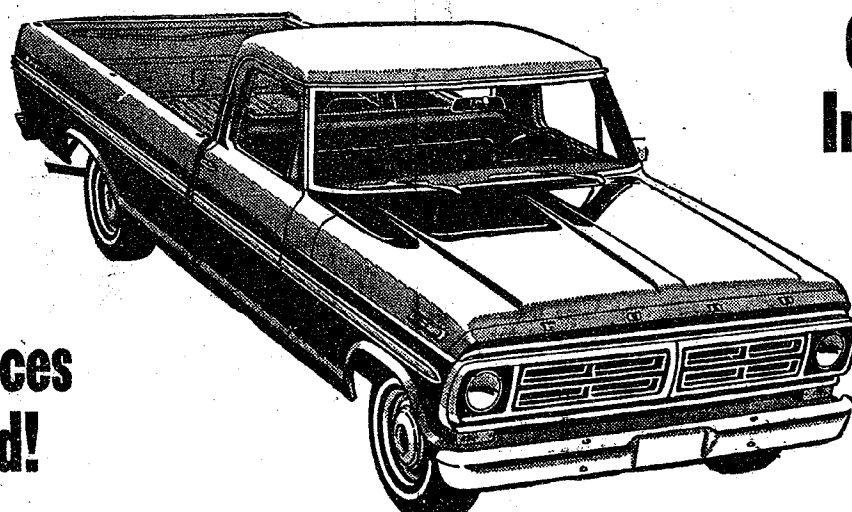
**HILLTOP
PLUMBING**

Phone 475-2949

1414 S. Main St. Chelsea, Mich.

9th ANNUAL

PICK-UP SALE



**Over 30
In Stock!**

**All Prices
Reduced!**

ONLY \$2195⁰⁰

For a brand new 1972 Ford, 1/2 ton F-100 Pick-up with Fresh Air Heater, Back-up Lights, Side Mirror, Chrome Grille, Spare Tire & fully Synchronized Transmission.

OUR SALES STAFF

Lyle Chriswell
John Popovich

Jack Becroft
Jim Smith

Bob Rentschler
George Palmer

PALMER FORD

CHelsea

SINCE APRIL 1912

475-3271

Open Monday through Friday 'til 9 p.m., and All Day Saturday.

MORE THAN DIAMONDS?
Large rubies of superior quality among the most valuable of gems, exceeding even diamonds in value.

BIGGEST FREEZER?
The largest glacier in the United States, the Bering Glacier, near Cordova, Alaska, is 127 miles long and covers 2,250 square miles.



PROBLEMS??
That's why we're here!
Trust us. We're the guys who know the inside story... and our shop is equipped for any car emergency. Service is our specialty. So bring your problems to us.

TIRES - BATTERIES - ELECTRONIC TUNE-UPS
BRAKE SERVICE - WHEEL ALIGNMENT - WRECKER SERVICE

Fred's Standard Service

889 S. Main, Chelsea

Phone 475-2804

(Political Advertising)

ELECT
WILLIAM H. (Bill)
STANDER

For
SHERIFF
Tuesday,
Aug. 8



★
Republican

15½ YEARS EXPERIENCE
QUALITY LAW ENFORCEMENT

NRA HUNTER
SAFETY COURSE

Sponsored By

CHELSEA ROD & GUN CLUB

Law requires this course for ages 12 through 16 to obtain first hunting license.

There will be a \$2.00 Registration Fee.

REGISTRATION BLANK

Name _____
Age _____ Date of Birth _____ Sex _____
Street _____
City _____ Phone _____
Date of Certification _____
Instructor Name _____
Street _____
City _____ State _____ Zip _____

Mail registration form to Gary Wortley, 20151 Old US-12, Chelsea, Mich. 48118, or bring to Jack's Barber Shop.

There will be handling and shooting of guns.

ALL FATHERS WELCOME.

NOW OPEN for Business
We Repair and Replace

- ★ Store Fronts
- ★ Furniture Tops
- ★ Shower Doors
- ★ Thermopanes
- ★ Auto Glass - Including Windshields
- ★ Mirrors
- ★ Patio Doors
- ★ Tub Enclosures

Free Pick-up and delivery on auto work.

Storm Door & Window Reglazing & Screens

COMMERCIAL BUILDINGS OR RESIDENTIAL
PROMPT SERVICE **REASONABLE PRICES**

Call or Stop in

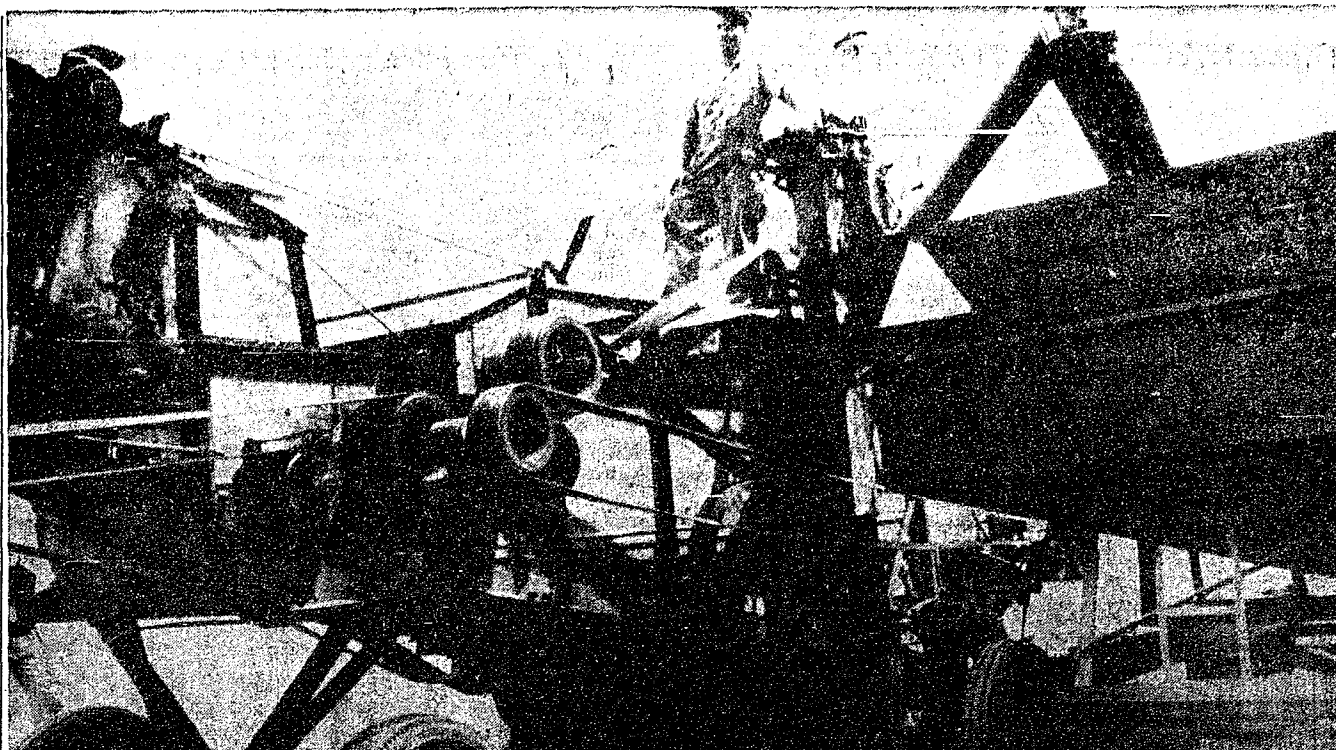
CHELSEA GLASS WORKS

Workmanship and Materials Fully Guaranteed

PHONE (313) 475-1147 • OPEN 8 a.m. to 5 p.m.

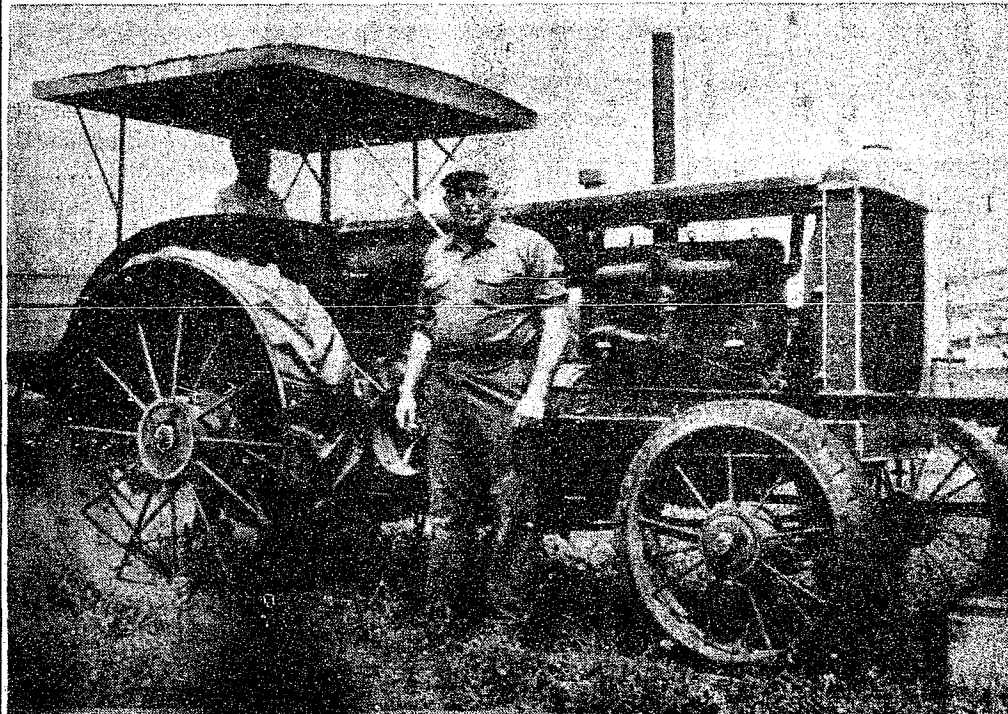
140 WEST MIDDLE ST.

CHELSEA, MICH.



MAN AMONG MACHINERY: Dave Curtis stands atop the separator at the end of the day. The harvest of five wagon loads of shocked wheat was conducted Saturday on the Don Irwin farm using

much of the same equipment used 40-50 years ago. The brief afternoon threshing yielded 140 bushels of good quality wheat.



DON IRWIN AND BAKER TRACTOR: Don Irwin stands in front of the Baker tractor, operated by Dave Curtis. The tractor was made in 1929, and still had the original Wisconsin engine when it was bought 12 years ago. It has since been converted to gasoline.

Old Fashioned Grain Harvest

Despite the heat, a crowd of dogs, children, and adults gathered at Don Irwin's farm at Sharon Hollow and Grass Lake Rds., Saturday, July 22, to watch and participate in the second annual old-fashioned wheat threshing.

Irwin uses old equipment, built prior to the 1930's. The workers used pitchforks to run five wagon loads of wheat through the Oliver Red River Special separator, which separated the grain from the fiber, retaining the grain but discarding the straw in a pile at the other end.

The yield for the day, as calculated by the separator, which is equipped with a scale mechanism, was 140 bushels of grain. Each bushel is equivalent to 60 pounds.

On hand to assist in the job were an old John Deere tractor and a 1929 Baker tractor. Dave Curtis picked up the Baker tractor 12 years ago, when it still had its original Wisconsin engine. After rebuilding the engine, Curtis saves the tractor for special occasions, such as the wheat threshing.

Women Golfers
Invited To Enter
Area Tournament

Women golfers 18 years of age and over in Washtenaw county are being invited to take part in the 44th annual Invitational Tournament of the Ann Arbor Women's Golf Association scheduled for Aug. 2-3-4 at Barton Hills Country Club.

The tournament is a 54-Hole Medal with 18 holes played each day. To play a women must be over 18, a member of the AAWGA, or a resident of Washtenaw county, or a member of any private or semi-private golf clubs in Washtenaw county.

Prizes will be awarded for the medalist the first day, the longest drive and the closest-to-the-hole at the end of the three days and for first, second and third place in each flight of nine players. Entry fee for the tournament is \$10 payable by check to the Ann Arbor Women's Golf Association and mailed to 1319 Ardmoor, Ann Arbor 48103.

Entries must be mailed no later than July 29 (Saturday) and must include the name, address, phone number, approximate 18-hole handicap and whether or not a cart will be needed on the first day.

In the United States we waste about two-thirds of a pound of food a day for each person living here.

Tennis Tourney To Start Aug. 1

For \$1 and a can of three tennis balls, you may enter an event of the tennis tournament sponsored by the Chelsea Recreation Department Aug. 1 to 13. Adults and youth participants may enter two events.

Youth events include singles and doubles in the following categories: 12-years and under, 14-years and under, 16-years and under, and 18-years and under.

Adults may enter singles, doubles, or mixed doubles.

If interested, fill out the coupon below and mail to Ken Larson, 410 Wenley St., Chelsea, by Friday, July 28.

Name _____
Address _____
Telephone _____
Events wishing to enter _____

Charcoal grills should be used outside where there is plenty of ventilation and no danger of carbon monoxide poisoning. You may invite tragedy by moving outdoor cooking equipment inside closed garages, porches, cabins, tents, or station wagons to escape bad weather.

VIETNAM VETERANS
ASSISTANCE DAY

Corcordia College - Ann Arbor, Michigan
SUNDAY, AUGUST 6 ' 12:30 - 6:30 p.m.

Questions and answers on schooling, unemployment, insurance, dental care and other GI benefits.

ALL VIETNAM VETERANS WELCOME

AD SPONSORED BY:

CHELSEA AMERICAN LEGION POST 31
DEXTER AMERICAN LEGION POST 557
CHELSEA VETERANS OF FOREIGN WARS 4076



M-m-m-milk
refreshes
best!

Pour glassfuls of goodness
with every meal and
at snacktime too.

Milk's the most when it
comes to thirst-quenching
tastiness. Call us today
for regular home delivery.

Milk is Nature's wonder-food. Drink it daily!

Hickory Ridge Farm Dairy

(Successor to Weinberg Dairy)
Stockbridge Mich. Phone (517) 851-3000

a paid political advertisement

Washtenaw County needs
Judge PATRICK J. CONLIN
on the Circuit Court

Judge Pat Conlin is a man of ideas... judicial experience... and integrity.

Here's what he has to say about the issues:

Accountability "I'm always ready to discuss, with anyone, the positions I take as judge. The way I see it, a judge is simply one human being who must make decisions affecting other human beings."

Expansion of Public Defender's Office "The county Public Defender's Office must be expanded to meet the needs of the growing number of people who, after careful checking, show that they can't afford to retain a private attorney. The county court system would have ample funds to support this."

Administrative Reorganization of the Circuit Court "The courts have outgrown their administrative structure, resulting in crowded dockets, lengthy adjournments, unreasonable delays. In addition, the court records system is outdated. We need to convert to a computerized record-keeping system, and the Circuit Court needs a professional Administrator. The court system would have funds to finance these administrative reforms without additional cost to taxpayers."

Fair and Firm Handling of Each Case "A judge must treat each case on its merits. The rights of a defendant are vitally important, yet the rights and duties of the prosecution and police are no less important. This is where accountability plays a part. If a judge has not maintained a humane attitude—or if he has bent over backward to favor either side—he should expect to be publicly challenged."



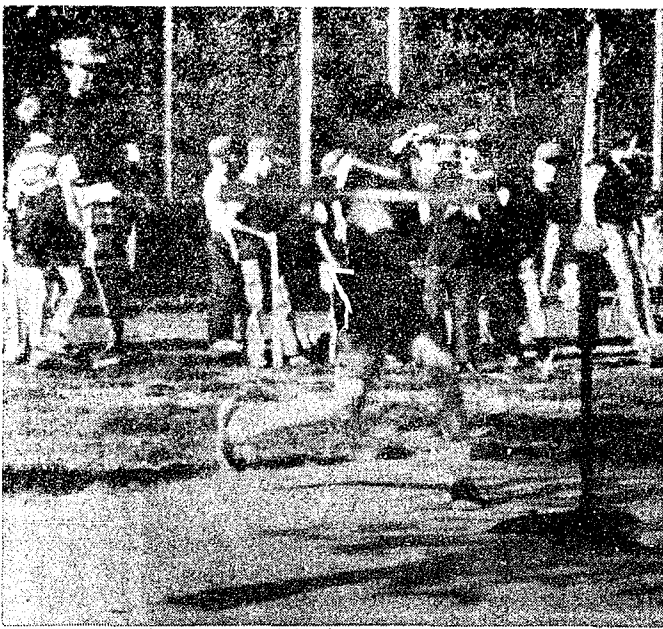
Judge Patrick J. Conlin

- ☐ He's a lifetime Washtenaw County resident and U-M Law School Graduate
- ☐ A trial lawyer 1961-68—with more trial experience than any other candidate for Circuit Judge
- ☐ 14th District Judge since 1969—the youngest man ever elected Judge in Washtenaw County

Conlin for Circuit Court Committee
James W. Dofegnan, Treasurer

Vote Judge Pat Conlin for Circuit Court

NONPARTISAN BALLOT • TUESDAY, AUGUST 8



BATTER UP: Tracy Borowski, Central Fibre Products T-Ball team player, gets ready to slam a home run off the T. Coach Bruce Galbraith (in the loud plaid shorts) is in background at left, plotting strategy for his team with the next batter.

DEATHS

Gary A. Luckhardt, Jr.

Birth at Ann Arbor Hospital
Infant Dies Shortly After

Gary Alan Luckhardt, Jr., infant son of Gary and Raylene Buckingham Luckhardt, died shortly after birth Sunday, July 23 at Mott Children's Hospital, Ann Arbor. The family home is at 408 E. Duncan St., Manchester.

Surviving are his parents; maternal grandparents, Mr. and Mrs. Raymond Buckingham of Chelsea; paternal grandparents, Mr. and Mrs. Andrew Luckhardt of Ann Arbor; and several aunts and uncles.

Graveside services were held at Mt. Olivet Cemetery Tuesday, July 25 at 3 p.m. with the Rev. Fr. Francis Wahowiak officiating.

Arrangements were made by the Burghardt Funeral Home.

Mrs. Frederick Trowse

Former Chelsea Resident
Dies at Home in New York

Mrs. Frederick (Florence) Trowse, 395 Longmeadow, Buffalo, N. Y., died Friday, July 21, after a long illness.

Mrs. Trowse was born Dec. 18, 1902 in Chelsea, the daughter of Henry and Margaret (Staffan) Fenn. She married Frederick Trowse Dec. 11, 1944, and lived in Buffalo from 1945 until her death.

Her husband, Frederick, survives, as well as several nieces, nephews and cousins. One brother, Clare Fenn, died in 1966.

Services were held at 10 a.m., Monday, July 24, at St. Mary Catholic church with the Rev. Francis Wahowiak officiating.

Burial took place at Mt. Olivet Cemetery. Arrangements were made by the Staffan Funeral Home.

Our nation's litter bill is more than one billion dollars a year. Picking up a ton of litter costs \$89, four times more than if it were collected as properly disposed-of residential trash.

Mrs. George Mayer

Dies Saturday at Nursing Home After Long Illness

Mrs. George J. (Amanda) Mayer, 328 Elm St., died July 22 at the Cedar Knoll Rest Home, Grass Lake. Mrs. Mayer had been a patient at the home since 1970.

Mrs. Mayer was born Sept. 17, 1880 in Lima township, the daughter of Gottlieb and Maria (Kaercher) Tony. She married George J. Mayer in 1908. He preceded her in death in 1950.

Surviving are one son, Walter, of Essexville, a sister, Mrs. Alfred (Bertha) Icheldinger of Ann Arbor, and several nieces and nephews.

Three sons predeceased Mrs. Mayer: Norman in 1939; Willis, 1945; and LeRoy, 1946.

Mrs. Mayer was a member of St. Paul United Church of Christ and of the church's Mission Club.

Services were held at the Staffan Funeral Home Tuesday, July 25, at 2 p.m. with the Rev. Warner H. Siebert officiating. Burial was at Oak Grove Cemetery.

Mrs. Lucy Moore

Former Area Teacher
Dies at 98 in California

Mrs. Lucy L. Moore, 98, of 421 North 12 Ave., Upland, Calif., died Tuesday, July 4.

Born Dec. 12, 1873, she graduated from Ypsilanti Normal School in Michigan in 1900, taught school in Michigan, and went to California in 1902. Many of her former pupils resided in the Chelsea area.

Foods and nutrition specialists say that variety both among and within the Basic 4 food groups is the most important single principle in assuring a proper diet. Daily recommendations include: four servings of bread or cereal; four servings of fruit or vegetables; two or three cups of milk plus other dairy products; and two, 3-ounce servings of meat, fish or poultry.

Magnavox

factory sponsored

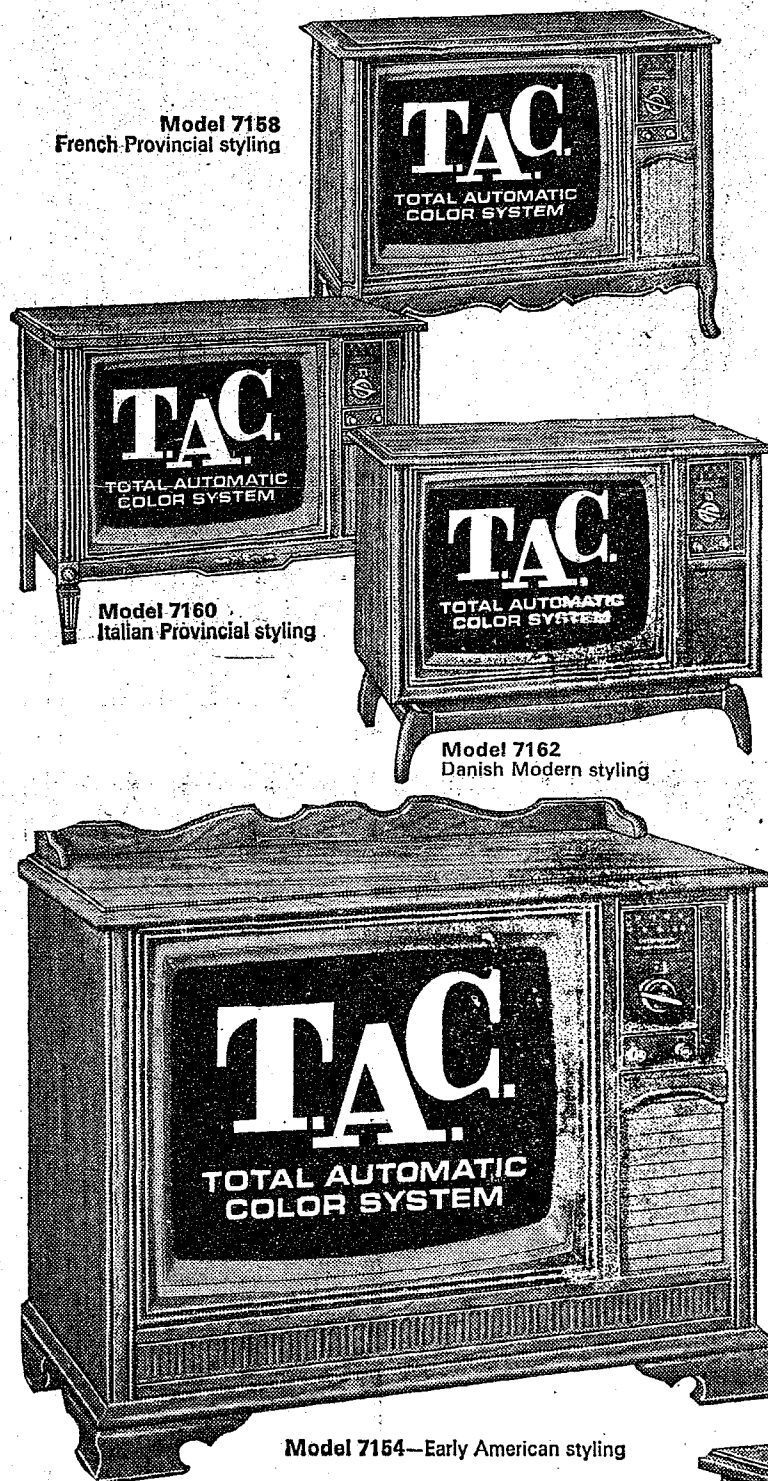
Clearance

**BUY
NOW**

**QUANTITIES
LIMITED!**

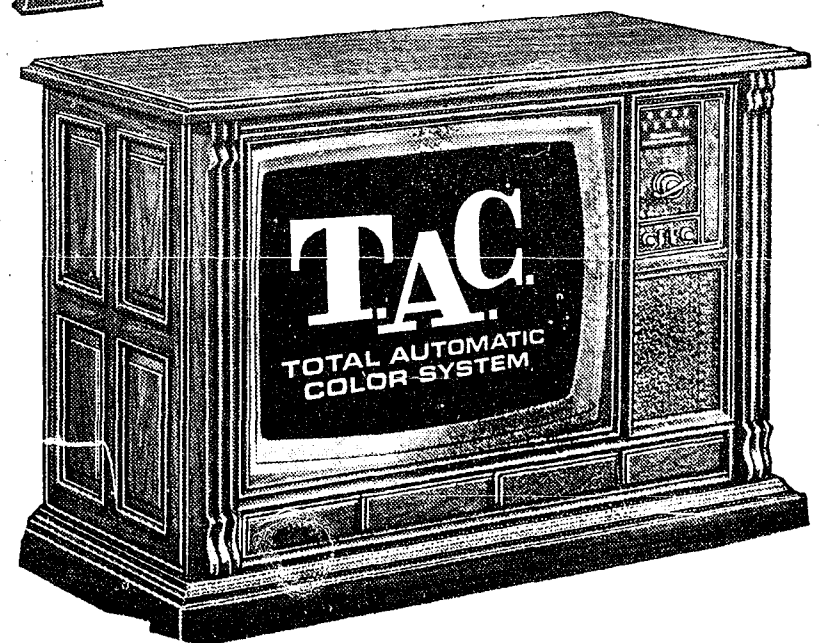
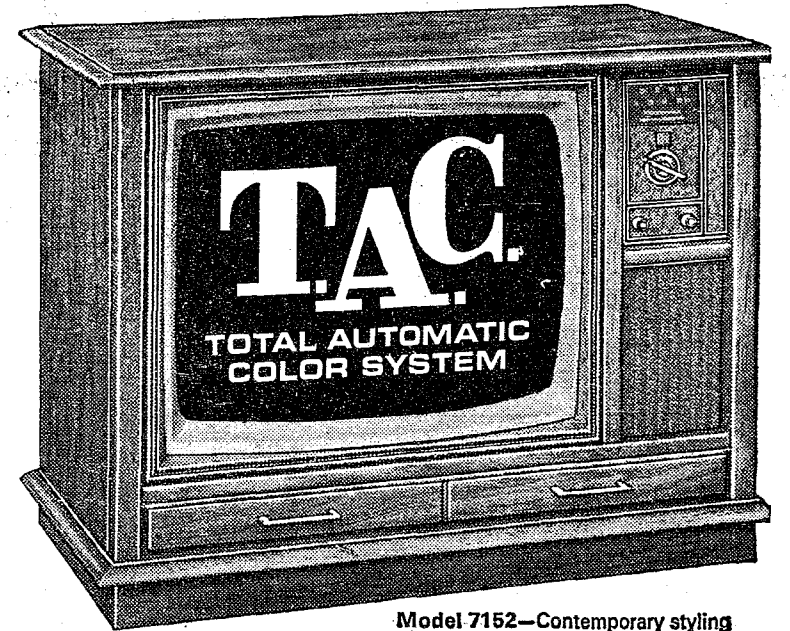
SAVE

We must make room for our new Magnavox models! Enjoy tremendous savings on a variety of our Magnavox floor samples, demonstrators and prior models (Color TV... Stereo... Portables... Radios... Tape Recorders... and Component Systems)—some in original factory-sealed cartons!



These great Magnavox fine furniture Color TV values look a good off as they do on. Their authentic styling will enhance your home... and their advanced features will bring you wonderful viewing enjoyment. TAC automatically keeps flesh tones natural and pictures sharp. There's no more jumping up and down to adjust controls... and there are no more green or purple faces. The Matrix Picture Tube brings you far better contrast, brighter and sharper pictures. Discover for yourself why we say, "Magnavox gives you more!"

Beautiful 25" Diagonal Total Automatic Color Consoles



Your Choice
OF SIX STYLES

SAVE \$21.00
NOW \$528⁰⁰

HEYDLAUFF'S

113 North Main Str., Chelsea

Phone 475-1221

It's the **LATEST** — it's **Acrylic LATEX**

Dutch Boy
LATEX HOUSE PAINT
FOR OUTSIDE WOOD AND MASONRY

Come in and get the facts on another dependable quality Dutch Boy House Paint—one that's new and different! It offers many advantages in ease of application, improved color retention.



"Dutch Boy" does it... best!



MERKEL BROS.

Open Mon. & Fri. Until 9

Phone 475-8621